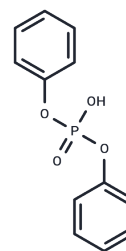


Diphenyl phosphate

Chemical Properties

CAS No. :	838-85-7
Formula:	C ₁₂ H ₁₁ O ₄ P
Molecular Weight:	250.19
Storage:	Powder: -20°C for 3 years In solvent: -80°C for 1 year Actual storage temperature shall be subject to the COA.



Biological Description

Description	Diphenyl Phosphate is capable of gender-specific inhibition of growth and energy metabolism in zebrafish.
Targets(IC50)	Others, Mitochondrial Metabolism

Solubility Information

Solubility	DMSO: 55 mg/mL (219.83 mM), Sonication is recommended. (< 1 mg/ml refers to the product slightly soluble or insoluble)
In vivo Formulation	10% DMSO+40% PEG300+5% Tween 80+45% Saline: 2 mg/mL (7.99 mM), Sonication is recommended. <i>Please add the solvents sequentially, clarifying the solution as much as possible before adding the next one. Dissolve by heating and/or sonication if necessary. Working solution is recommended to be prepared and used immediately. The formulation provided above is for reference purposes only. In vivo formulations may vary and should be modified based on specific experimental conditions.</i>

Preparing Stock Solutions

	1mg	5mg	10mg
1 mM	3.997 mL	19.9848 mL	39.9696 mL
5 mM	0.7994 mL	3.997 mL	7.9939 mL
10 mM	0.3997 mL	1.9985 mL	3.997 mL
50 mM	0.0799 mL	0.3997 mL	0.7994 mL

Please select the appropriate solvent to prepare the stock solution, according to the solubility of the product in different solvents. Please use it as soon as possible.

Note: The dilution table applies only to solid products. For liquid products, please calculate the stock solution based on the stated concentration and/or density.

Reference

Ruirui Liu et. al. Talanta, 147, 69-75 (2016)

Inhibitor · Natural Compounds · Compound Libraries · Recombinant Proteins

This product is for Research Use Only · Not for Human or Veterinary or Therapeutic Use

Tel:781-999-4286 E_mail:info@targetmol.com Address:34 Washington Street,Wellesley Hills,MA 02481