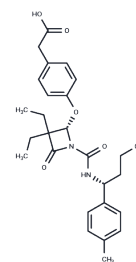


L 680833

Chemical Properties

CAS No. : 127063-08-5
 Formula: C₂₇H₃₄N₂O₅
 Molecular Weight: 466.57
 Storage: Powder: -20°C for 3 years | In solvent: -80°C for 1 year
 Actual storage temperature shall be subject to the COA.



Biological Description

Description	L 680833 is an orally active monocyclic beta-lactam human polymorphonuclear leukocyte elastase inhibitor.
Targets(IC50)	Others,Antibacterial,Serine Protease

Preparing Stock Solutions

	1mg	5mg	10mg
1 mM	2.1433 mL	10.7165 mL	21.433 mL
5 mM	0.4287 mL	2.1433 mL	4.2866 mL
10 mM	0.2143 mL	1.0717 mL	2.1433 mL
50 mM	0.0429 mL	0.2143 mL	0.4287 mL

Please select the appropriate solvent to prepare the stock solution, according to the solubility of the product in different solvents. Please use it as soon as possible.

Note: The dilution table applies only to solid products. For liquid products, please calculate the stock solution based on the stated concentration and/or density.

Reference

- Dwyer TM, Farley JM. Human neutrophil elastase releases two pools of mucinlike glycoconjugate from tracheal submucosal gland cells. *Am J Physiol Lung Cell Mol Physiol.* 2000 Apr;278(4):L675-82. PubMed PMID: 10749744.
- Macchia B, Gentili D, Macchia M, Mamone F, Martinelli A, Orlandini E, Rossello A, Cercignani G, Pierotti R, Allegretti M, Asti C, Caselli G. Synthesis, inhibitory activity towards human leukocyte elastase and molecular modelling studies of 1-carbamoyl-4-methyleneaminoxazetidiones. *Eur J Med Chem.* 2000 Jan;35(1):53-67. PubMed PMID: 10733603.
- Sköld CM, Liu X, Umino T, Zhu Y, Ohkuni Y, Romberger DJ, Spurzem JR, Heires AJ, Rennard SI. Human neutrophil elastase augments fibroblast-mediated contraction of released collagen gels. *Am J Respir Crit Care Med.* 1999 Apr;159(4 Pt 1):1138-46. PubMed PMID: 10194158.
- Rees DD, Brain JD. Effects of cystic fibrosis airway secretions on rat lung: role of neutrophil elastase. *Am J Physiol.* 1995 Aug;269(2 Pt 1):L195-202. PubMed PMID: 7653580.

Inhibitor · Natural Compounds · Compound Libraries · Recombinant Proteins

This product is for Research Use Only · Not for Human or Veterinary or Therapeutic Use

Tel:781-999-4286 E_mail:info@targetmol.com Address:34 Washington Street,Wellesley Hills,MA 02481