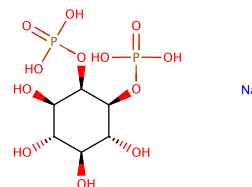


D-myo-Inositol-1,2-diphosphate (sodium salt)

Chemical Properties

CAS No. :	208584-51-4
Formula:	C ₆ H ₁₂ Na ₂ O ₁₂ P ₂
Molecular Weight:	384.08
Storage:	Powder: -20°C for 3 years In solvent: -80°C for 1 year Actual storage temperature shall be subject to the COA.



Biological Description

Description	Ins(1,2)P ₂ (sodium salt) is one of the many inositol phosphate (InsP) isomers that could act as small, soluble second messengers in the transmission of cellular signals. The most studied InsP Ins(1,4,5)P ₃ , is a second messenger produced in cells by phospholipase C (PLC)-mediated hydrolysis of phosphatidylinositol-4,5-bisphosphate. Binding of Ins(1,4,5)P ₃ to its receptor on the endoplasmic reticulum results in opening of the calcium channels and an increase in intracellular calcium. Ins(1,2)P ₂ (tested as the D/L racemic mixture) is ~1,000-fold less potent than Ins(1,4,5)P ₃ at initiating Ca ²⁺ release when injected into <i>Xenopus</i> oocytes.
Targets(IC50)	Others, Calcium Channel

Solubility Information

Solubility	H ₂ O: 5 mg/mL (13.02 mM), Sonication is recommended. (< 1 mg/ml refers to the product slightly soluble or insoluble)
------------	---

Preparing Stock Solutions

	1mg	5mg	10mg
1 mM	2.6036 mL	13.0181 mL	26.0362 mL
5 mM	0.5207 mL	2.6036 mL	5.2072 mL
10 mM	0.2604 mL	1.3018 mL	2.6036 mL
50 mM	0.0521 mL	0.2604 mL	0.5207 mL

Please select the appropriate solvent to prepare the stock solution, according to the solubility of the product in different solvents. Please use it as soon as possible.

Note: The dilution table applies only to solid products. For liquid products, please calculate the stock solution based on the stated concentration and/or density.

Inhibitor · Natural Compounds · Compound Libraries · Recombinant Proteins

This product is for Research Use Only · Not for Human or Veterinary or Therapeutic Use

Tel:781-999-4286 E_mail:info@targetmol.com Address:34 Washington Street,Wellesley Hills,MA 02481