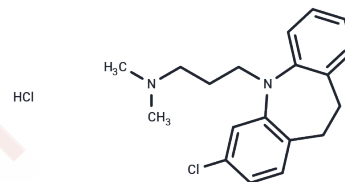


Clomipramine hydrochloride

Chemical Properties

CAS No. :	17321-77-6
Formula:	C ₁₉ H ₂₃ ClN ₂ ·HCl
Molecular Weight:	351.31
Storage:	Powder: -20°C for 3 years In solvent: -80°C for 1 year Actual storage temperature shall be subject to the COA.



Biological Description

Description	Clomipramine hydrochloride (Anafranil) is a tricyclic antidepressant similar to IMIPRAMINE that selectively inhibits the uptake of serotonin in the brain. It is readily absorbed from the gastrointestinal tract and demethylated in the liver to form its primary active metabolite, desmethylclomipramine.
Targets(IC50)	5-HT Receptor, Norepinephrine, Dopamine Receptor, GST, Serotonin Transporter

Solubility Information

Solubility	H ₂ O: 142.32 mM, Sonication is recommended. DMSO: 7.5 mg/mL (21.35 mM), Sonication is recommended. (< 1 mg/ml refers to the product slightly soluble or insoluble)
In vivo Formulation	10% DMSO+40% PEG300+5% Tween 80+45% Saline: 1 mg/mL (2.85 mM), Sonication is recommended. <i>Please add the solvents sequentially, clarifying the solution as much as possible before adding the next one. Dissolve by heating and/or sonication if necessary. Working solution is recommended to be prepared and used immediately. The formulation provided above is for reference purposes only. In vivo formulations may vary and should be modified based on specific experimental conditions.</i>

Preparing Stock Solutions

	1mg	5mg	10mg
1 mM	2.8465 mL	14.2324 mL	28.4649 mL
5 mM	0.5693 mL	2.8465 mL	5.693 mL
10 mM	0.2846 mL	1.4232 mL	2.8465 mL
50 mM	0.0569 mL	0.2846 mL	0.5693 mL

Please select the appropriate solvent to prepare the stock solution, according to the solubility of the product in different solvents. Please use it as soon as possible.

Note: The dilution table applies only to solid products. For liquid products, please calculate the stock solution based on the stated concentration and/or density.

Reference

McTavish, D. and P. Benfield, Clomipramine. An overview of its pharmacological properties and a review of its therapeutic use in obsessive compulsive disorder and panic disorder. *Drugs*, 1990. 39(1): p. 136-53.

Ortiz, J. and F. Artigas, Effects of monoamine uptake inhibitors on extracellular and platelet 5-hydroxytryptamine in rat blood: different effects of clomipramine and fluoxetine. *Br J Pharmacol*, 1992. 105(4): p. 941-6.

Owens, M.J., et al., Neurotransmitter receptor and transporter binding profile of antidepressants and their metabolites. *J Pharmacol Exp Ther*, 1997. 283(3): p. 1305-22.

Inhibitor · Natural Compounds · Compound Libraries · Recombinant Proteins

This product is for Research Use Only · Not for Human or Veterinary or Therapeutic Use

Tel:781-999-4286 E_mail:info@targetmol.com Address:34 Washington Street,Wellesley Hills,MA 02481