

Oxyfedrine L-form HCl

Chemical Properties

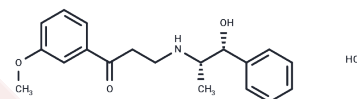
CAS No. : 16777-42-7

Formula: C₁₉H₂₄ClNO₃

Molecular Weight: 349.85

Storage: Powder: -20°C for 3 years | In solvent: -80°C for 1 year

Actual storage temperature shall be subject to the COA.



Biological Description

Description	Oxyfedrine L-form HCl (Ildamen) is a partial agonist at beta-adrenergic receptors and acts as a coronary vasodilator and cardiostimulant agent.
Targets(IC50)	Adrenergic Receptor

Solubility Information

Solubility	DMSO: 45 mg/mL (128.63 mM), Sonication is recommended. (< 1 mg/ml refers to the product slightly soluble or insoluble)
------------	---

Preparing Stock Solutions

	1mg	5mg	10mg
1 mM	2.8584 mL	14.2918 mL	28.5837 mL
5 mM	0.5717 mL	2.8584 mL	5.7167 mL
10 mM	0.2858 mL	1.4292 mL	2.8584 mL
50 mM	0.0572 mL	0.2858 mL	0.5717 mL

Please select the appropriate solvent to prepare the stock solution, according to the solubility of the product in different solvents. Please use it as soon as possible.

Note: The dilution table applies only to solid products. For liquid products, please calculate the stock solution based on the stated concentration and/or density.

Reference

Hayat S, et al. Physiological changes induced by chromium stress in plants: an overview. *Protoplasma*. 2012 Jul; 249(3):599-611.

Mazumdar K, Asok Kumar K, Dutta NK. Potential role of the cardiovascular non-antibiotic (helper compound) amlodipine in the treatment of microbial infections: scope and hope for the future. *Int J Antimicrob Agents*. 2010 Oct;36(4):295-302.

Sukoyan GV, Antelava NA. Rational drug correction of systemic inflammatory response syndrome in severe experimental heart failure. *Bull Exp Biol Med*. 2009 Apr;147(4):411-4. English, Russian.

Mazumdar K, Dutta NK, Kumar KA, Dastidar SG. In vitro and in vivo synergism between tetracycline and the cardiovascular agent oxyfedrine HCl against common bacterial strains. *Biol Pharm Bull*. 2005 Apr;28(4):713-7.

Inhibitor · Natural Compounds · Compound Libraries · Recombinant Proteins

This product is for Research Use Only · Not for Human or Veterinary or Therapeutic Use

Tel:781-999-4286 E_mail:info@targetmol.com Address:34 Washington Street,Wellesley Hills,MA 02481