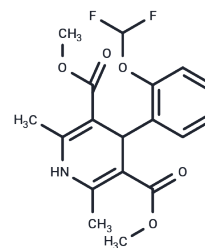


Riodipine

Chemical Properties

CAS No. :	71653-63-9
Formula:	C ₁₈ H ₁₉ F ₂ N ₁ O ₅
Molecular Weight:	367.34
Storage:	Powder: -20°C for 3 years In solvent: -80°C for 1 year Actual storage temperature shall be subject to the COA.



Biological Description

Description	Riodipine, a calcium channel blocker, is used as cardiovascular drugs.
Targets(IC50)	Others, Calcium Channel

Preparing Stock Solutions

	1mg	5mg	10mg
1 mM	2.7223 mL	13.6114 mL	27.2227 mL
5 mM	0.5445 mL	2.7223 mL	5.4445 mL
10 mM	0.2722 mL	1.3611 mL	2.7223 mL
50 mM	0.0544 mL	0.2722 mL	0.5445 mL

Please select the appropriate solvent to prepare the stock solution, according to the solubility of the product in different solvents. Please use it as soon as possible.

Note: The dilution table applies only to solid products. For liquid products, please calculate the stock solution based on the stated concentration and/or density.

Reference

Zherelova OM, Grishchenko VM, Chaylakhyan LM. Blockers of Ca²⁺ channels in the plasmalemma of perfused Characeae cells. *Comp Biochem Physiol Pharmacol Toxicol Endocrinol*. 1994 Mar;107(3):475-80. PubMed PMID: 8061954.

Kryzhanovskii GN, Karpova MN, Abrosimov Iu. [The anticonvulsive activity of the 1,4-dihydropyridine derivative riodipine and other anticonvulsants when used in combination]. *Biull Eksp Biol Med*. 1993 Jul;116(7):15-7. Russian. PubMed PMID: 8400164.

Kryzhanovskii GN, Karpova MN, Pankov Olu, Abramova EM, Abrosimov Iu. [The antiepileptic effects of sodium valproate and the calcium antagonist riodipine when used jointly in a model of generalized korazol-induced epileptic activity]. *Biull Eksp Biol Med*. 1992 Oct;114(10):376-8. Russian. PubMed PMID: 1288691.

Kryzhanovskii GN, Karpova MN, Abramova EM, Abrosimov Iu. [The antiepileptic effects of sodium valproate and the calcium antagonist riodipine when used jointly in a model of focal penicillin-induced epileptic activity]. *Biull Eksp Biol Med*. 1992 Oct;114(10):369-70. Russian. PubMed PMID: 1288688.

Inhibitor · Natural Compounds · Compound Libraries · Recombinant Proteins

This product is for Research Use Only · Not for Human or Veterinary or Therapeutic Use

Tel:781-999-4286 E_mail:info@targetmol.com Address:34 Washington Street,Wellesley Hills,MA 02481