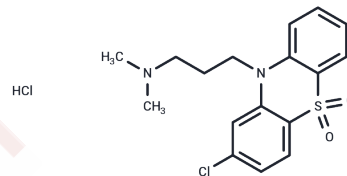


## Chlorpromazine Sulfone Hydrochloride

## Chemical Properties

CAS No. :	18683-73-3
Formula:	C <sub>17</sub> H <sub>20</sub> Cl <sub>2</sub> N <sub>2</sub> O <sub>2</sub> S
Molecular Weight:	387.32
Storage:	Powder: -20°C for 3 years   In solvent: -80°C for 1 year Actual storage temperature shall be subject to the COA.



## Biological Description

Description	Chlorpromazine Sulfone Hydrochloride is a metabolite of Chlorpromazine -- an anti-emetic and anti-psychotic agent. It may also be used as a potential N-methyltransferase inhibitor.
Targets(IC50)	Others

## Preparing Stock Solutions

	1mg	5mg	10mg
1 mM	2.5818 mL	12.9092 mL	25.8184 mL
5 mM	0.5164 mL	2.5818 mL	5.1637 mL
10 mM	0.2582 mL	1.2909 mL	2.5818 mL
50 mM	0.0516 mL	0.2582 mL	0.5164 mL

Please select the appropriate solvent to prepare the stock solution, according to the solubility of the product in different solvents. Please use it as soon as possible.

Note: The dilution table applies only to solid products. For liquid products, please calculate the stock solution based on the stated concentration and/or density.

## Reference

Li S, Tian T, Zhang T, et al. A bioswitchable delivery system for microRNA therapeutics based on a tetrahedral DNA nanostructure. *Nature Protocols*. 2024: 1-27.

Inhibitor · Natural Compounds · Compound Libraries · Recombinant Proteins

This product is for Research Use Only · Not for Human or Veterinary or Therapeutic Use

Tel: 781-999-4286 E\_mail: info@targetmol.com Address: 34 Washington Street, Wellesley Hills, MA 02481