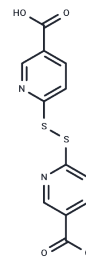


## CPDS

## Chemical Properties

CAS No. :	15658-35-2
Formula:	C <sub>12</sub> H <sub>8</sub> N <sub>2</sub> O <sub>4</sub> S <sub>2</sub>
Molecular Weight:	308.33
Storage:	Powder: -20°C for 3 years   In solvent: -80°C for 1 year Actual storage temperature shall be subject to the COA.



## Biological Description

Description	CPDS is a non permeant thiol agent which affects several mitochondrial functions. In rat liver mitochondria, CPDS inhibits only the Pi/OH <sup>-</sup> carrier; both CPDS and n-butylmalonate are necessary to inhibit completely Pi entry.
Targets(IC50)	Others

## Solubility Information

Solubility	DMSO: 55 mg/mL (178.38 mM),Sonication is recommended. (< 1 mg/ml refers to the product slightly soluble or insoluble)
In vivo Formulation	10% DMSO+90% Corn Oil: 2.5 mg/mL (8.11 mM),Sonication is recommended. <i>Please add the solvents sequentially, clarifying the solution as much as possible before adding the next one. Dissolve by heating and/or sonication if necessary. Working solution is recommended to be prepared and used immediately. The formulation provided above is for reference purposes only. In vivo formulations may vary and should be modified based on specific experimental conditions.</i>

## Preparing Stock Solutions

	1mg	5mg	10mg
1 mM	3.2433 mL	16.2164 mL	32.4328 mL
5 mM	0.6487 mL	3.2433 mL	6.4866 mL
10 mM	0.3243 mL	1.6216 mL	3.2433 mL
50 mM	0.0649 mL	0.3243 mL	0.6487 mL

Please select the appropriate solvent to prepare the stock solution, according to the solubility of the product in different solvents. Please use it as soon as possible.

Note: The dilution table applies only to solid products. For liquid products, please calculate the stock solution based on the stated concentration and/or density.

Reference

Abou-Khalil S, Sabidie-Pialoux N, Gautheron DC. Special features of Pi transport in pig heart and rat liver mitochondria as revealed by 6,6'-dithiodinicotinic acid (CPDS). Biochimie. 1975;57(9):1087-94.

**Inhibitor · Natural Compounds · Compound Libraries · Recombinant Proteins**

This product is for Research Use Only · Not for Human or Veterinary or Therapeutic Use

Tel:781-999-4286 E\_mail:info@targetmol.com Address:34 Washington Street,Wellesley Hills,MA 02481