

## Sorbitan monooleate

## Chemical Properties

CAS No. : 1338-43-8

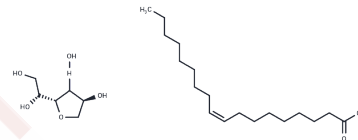
Formula: C<sub>24</sub>H<sub>47</sub>O<sub>7</sub>

Molecular Weight: 447.633

Pure form: -20°C for 3 years | In solvent: -80°C for 1

Storage: year

Actual storage temperature shall be subject to the COA.



## Biological Description

Description	Sorbitan monooleate is a pharmaceutical excipient, a lipophilic nonionic surfactant, and is often used as an emulsifier in cosmetics, food and pharmaceuticals.
Targets(IC50)	Others

## Solubility Information

Solubility	DMSO: 80.00 mg/mL (178.72 mM),Sonication is recommended. (< 1 mg/ml refers to the product slightly soluble or insoluble)
In vivo Formulation	10% DMSO+40% PEG300+5% Tween 80+45% Saline: 3.30 mg/mL (7.37 mM),Sonication is recommended. <i>Please add the solvents sequentially, clarifying the solution as much as possible before adding the next one. Dissolve by heating and/or sonication if necessary. Working solution is recommended to be prepared and used immediately. The formulation provided above is for reference purposes only. In vivo formulations may vary and should be modified based on specific experimental conditions.</i>

## Preparing Stock Solutions

	1mg	5mg	10mg
1 mM	2.234 mL	11.1699 mL	22.3399 mL
5 mM	0.4468 mL	2.234 mL	4.468 mL
10 mM	0.2234 mL	1.117 mL	2.234 mL
50 mM	0.0447 mL	0.2234 mL	0.4468 mL

Please select the appropriate solvent to prepare the stock solution, according to the solubility of the product in different solvents. Please use it as soon as possible.

Note: The dilution table applies only to solid products. For liquid products, please calculate the stock solution based on the stated concentration and/or density.

Reference

Deng, Henghui, et al. UV resistance, anticorrosion and high toughness bio-based waterborne polyurethane enabled by a Sorbitan monooleate. Chemical engineering journal (2022):446P1.

Elder DP, et al. Pharmaceutical excipients - quality, regulatory and biopharmaceutical considerations. Eur J Pharm Sci. 2016 May 25;87:88-99.

**Inhibitor · Natural Compounds · Compound Libraries · Recombinant Proteins**

This product is for Research Use Only · Not for Human or Veterinary or Therapeutic Use

Tel:781-999-4286 E\_mail:info@targetmol.com Address:34 Washington Street,Wellesley Hills,MA 02481