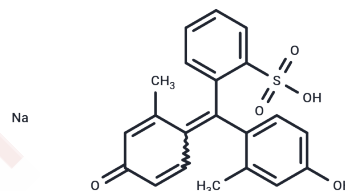


Cresol purple sodium

Chemical Properties

CAS No. :	408360-08-7
Formula:	C ₂₁ H ₁₈ NaO ₅ S
Molecular Weight:	405.42
Storage:	Powder: -20°C for 3 years In solvent: -80°C for 1 year Actual storage temperature shall be subject to the COA.



Biological Description

Description	Cresol purple sodium is a bioactive chemical.
Targets(IC50)	Others

Preparing Stock Solutions

	1mg	5mg	10mg
1 mM	2.4666 mL	12.3329 mL	24.6658 mL
5 mM	0.4933 mL	2.4666 mL	4.9332 mL
10 mM	0.2467 mL	1.2333 mL	2.4666 mL
50 mM	0.0493 mL	0.2467 mL	0.4933 mL

Please select the appropriate solvent to prepare the stock solution, according to the solubility of the product in different solvents. Please use it as soon as possible.

Note: The dilution table applies only to solid products. For liquid products, please calculate the stock solution based on the stated concentration and/or density.

Reference

İriboz E, Bayraktar K, Türkaydın D, Tarçın B. Comparison of apical extrusion of sodium hypochlorite using 4 different root canal irrigation techniques. *J Endod.* 2015 Mar;41(3):380-4. doi: 10.1016/j.joen.2014.11.003. Epub 2014 Dec 6. PubMed PMID: 25492488.

Mitchell RP, Baumgartner JC, Sedgley CM. Apical extrusion of sodium hypochlorite using different root canal irrigation systems. *J Endod.* 2011 Dec;37(12):1677-81. doi: 10.1016/j.joen.2011.09.004. Epub 2011 Oct 22. PubMed PMID: 22099904.

Mitchell RP, Yang SE, Baumgartner JC. Comparison of apical extrusion of NaOCl using the EndoVac or needle irrigation of root canals. *J Endod.* 2010 Feb;36(2):338-41. doi: 10.1016/j.joen.2009.10.003. Epub 2010 Jan 19. PubMed PMID: 20113804.

Onken H, Moffett SB, Moffett DF. Alkalinization in the isolated and perfused anterior midgut of the larval mosquito, *Aedes aegypti*. *J Insect Sci.* 2008;8:1-20. doi: 10.1673/031.008.4601. PubMed PMID: 20307229; PubMed Central PMCID: PMC2846556.

Inhibitor · Natural Compounds · Compound Libraries · Recombinant Proteins

This product is for Research Use Only · Not for Human or Veterinary or Therapeutic Use

Tel:781-999-4286 E_mail:info@targetmol.com Address:34 Washington Street,Wellesley Hills,MA 02481