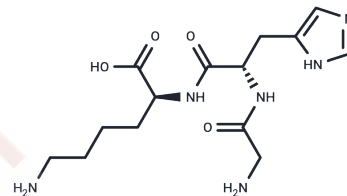


Glycyl-L-Histidyl-L-Lysine

Chemical Properties

CAS No. :	49557-75-7
Formula:	C ₁₄ H ₂₄ N ₆ O ₄
Molecular Weight:	340.38
Storage:	Keep away from moisture Powder: -20°C for 3 years In solvent: -80°C for 1 year <small>Actual storage temperature shall be subject to the COA.</small>



Biological Description

Description	Glycyl-L-histidyl-L-lysine is a synthetic hepatotropic agent and liver cell growth factor that stimulates the production of hepatic erythropoietic factor.
Targets(IC50)	Others

Solubility Information

Solubility	DMSO: 10 mM, Sonication is recommended. H ₂ O: 250 mg/mL (734.47 mM), Sonication is recommended. (< 1 mg/ml refers to the product slightly soluble or insoluble)
------------	--------------------------------------------------------------------------------------------------------------------------------------------------------------------------------------

Preparing Stock Solutions

	1mg	5mg	10mg
1 mM	2.9379 mL	14.6895 mL	29.3789 mL
5 mM	0.5876 mL	2.9379 mL	5.8758 mL
10 mM	0.2938 mL	1.4689 mL	2.9379 mL
50 mM	0.0588 mL	0.2938 mL	0.5876 mL

Please select the appropriate solvent to prepare the stock solution, according to the solubility of the product in different solvents. Please use it as soon as possible.

Note: The dilution table applies only to solid products. For liquid products, please calculate the stock solution based on the stated concentration and/or density.

Reference

Naughton BA,etal.The influence of pancreatic hormones and diabetogenic procedures on erythropoietin production.J Surg Oncol. 1982 Oct;21(2):97-103.

Yang N, Wessoly L, Meng Y, et al.The Oxidoreductase Retinol Saturase in Thyroid Gland Is Regulated by Hypothyroidism and Iodide Overload and Its Deletion Impairs Metabolic Homeostasis in Mice.Antioxidants & Redox Signaling.2025

Inhibitor · Natural Compounds · Compound Libraries · Recombinant Proteins

This product is for Research Use Only· Not for Human or Veterinary or Therapeutic Use

Tel:781-999-4286 E_mail:info@targetmol.com Address:34 Washington Street,Wellesley Hills,MA 02481