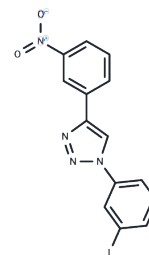


P62-mediated mitophagy inducer

Chemical Properties

CAS No. :	1809031-84-2
Formula:	C ₁₄ H ₉ N ₄ O ₂
Molecular Weight:	392.15
Storage:	Keep away from direct sunlight Powder: -20°C for 3 years In solvent: -80°C for 1 year <small>Actual storage temperature shall be subject to the COA.</small>



Biological Description

Description	P62-mediated mitophagy inducer (PMI) is a regulator of mitophagy.
Targets(IC50)	Mitophagy, Autophagy, p62

Solubility Information

Solubility	DMSO: 7.9 mg/mL (20.15 mM), Sonication is recommended. (< 1 mg/ml refers to the product slightly soluble or insoluble)
In vivo Formulation	10% DMSO+40% PEG300+5% Tween 80+45% Saline: 1 mg/mL (2.55 mM), Sonication is recommended. <i>Please add the solvents sequentially, clarifying the solution as much as possible before adding the next one. Dissolve by heating and/or sonication if necessary. Working solution is recommended to be prepared and used immediately. The formulation provided above is for reference purposes only. In vivo formulations may vary and should be modified based on specific experimental conditions.</i>

Preparing Stock Solutions

	1mg	5mg	10mg
1 mM	2.550 mL	12.7502 mL	25.5004 mL
5 mM	0.510 mL	2.550 mL	5.1001 mL
10 mM	0.255 mL	1.275 mL	2.550 mL
50 mM	0.051 mL	0.255 mL	0.510 mL

Please select the appropriate solvent to prepare the stock solution, according to the solubility of the product in different solvents. Please use it as soon as possible.

Note: The dilution table applies only to solid products. For liquid products, please calculate the stock solution based on the stated concentration and/or density.

Reference

East DA, et al. PMI: a $\Delta\Psi$ m independent pharmacological regulator of mitophagy. Chem Biol. 2014 Nov 20;21(11): 1585-96.

Inhibitor · Natural Compounds · Compound Libraries · Recombinant Proteins

This product is for Research Use Only · Not for Human or Veterinary or Therapeutic Use

Tel:781-999-4286 E_mail:info@targetmol.com Address:34 Washington Street,Wellesley Hills,MA 02481