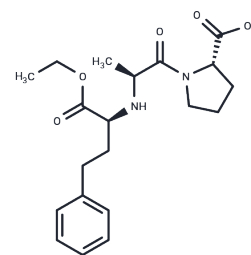


Enalapril

Chemical Properties

CAS No. :	75847-73-3
Formula:	C ₂₀ H ₂₈ N ₂ O ₅
Molecular Weight:	376.45
Storage:	Powder: -20°C for 3 years In solvent: -80°C for 1 year Actual storage temperature shall be subject to the COA.



Biological Description

Description	Enalapril is a dicarboxyl-containing peptide and angiotensin-converting enzyme (ACE) inhibitor with antihypertensive activity.
Targets(IC50)	RAAS,Angiotensin-converting Enzyme (ACE),MRP
Kinase Assay	PDGF receptor kinase activity: PDGF receptor is immunoprecipitated from BALB/c 3T3 cell extracts with rabbit antiserum to the murine PDGF receptor for 2 hours on ice. Protein A-Sepharose beads are used to collect the antigen-antibody complexes. The immunoprecipitates are washed twice with TNET (50 mM Tris, pH 7.5, 140 mM NaCl, 5 mM EDTA, 1% Triton X-100), once with TNE (50 mM Tris, pH 7.5, 140 mM EDTA), and once with kinase buffer (20 mM Tris, pH 7.5,10 mM MgCl ₂). After stimulation with PDGF (50 ng/mL) for 10 minutes at 4 °C, different concentrations of drug are added to the reaction mixture. PDGF receptor kinase activity is determined by incubation with 10 μCi [7- ³³ P]-ATP and 1 μM ATP for 10 minutes at 4 °C. Immune complexes are separated by SDS-PAGE on 7.5% gels.

Solubility Information

Solubility	H ₂ O: Soluble, DMSO: 55 mg/mL (146.1 mM),Sonication is recommended. (< 1 mg/ml refers to the product slightly soluble or insoluble)
In vivo Formulation	10% DMSO+40% PEG300+5% Tween-80+45% Saline: 5 mg/mL (13.28 mM),Sonication is recommended. <i>Please add the solvents sequentially, clarifying the solution as much as possible before adding the next one. Dissolve by heating and/or sonication if necessary. Working solution is recommended to be prepared and used immediately. The formulation provided above is for reference purposes only. In vivo formulations may vary and should be modified based on specific experimental conditions.</i>

Preparing Stock Solutions

	1mg	5mg	10mg
1 mM	2.6564 mL	13.282 mL	26.564 mL
5 mM	0.5313 mL	2.6564 mL	5.3128 mL
10 mM	0.2656 mL	1.3282 mL	2.6564 mL
50 mM	0.0531 mL	0.2656 mL	0.5313 mL

Please select the appropriate solvent to prepare the stock solution, according to the solubility of the product in different solvents. Please use it as soon as possible.

Note: The dilution table applies only to solid products. For liquid products, please calculate the stock solution based on the stated concentration and/or density.

Reference

Andujar-Sanchez M, et al. FEBS Lett. 2007 Jul 24;581(18):3449-54.

Inhibitor · Natural Compounds · Compound Libraries · Recombinant Proteins

This product is for Research Use Only · Not for Human or Veterinary or Therapeutic Use

Tel:781-999-4286 E_mail:info@targetmol.com Address:34 Washington Street,Wellesley Hills,MA 02481