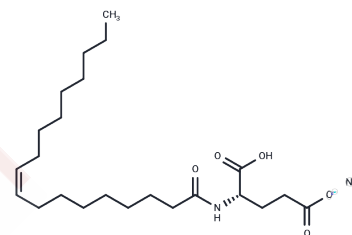


Sodium oleoyl glutamate

Chemical Properties

CAS No. :	35057-11-5
Formula:	C ₂₃ H ₄₀ NNaO ₅
Molecular Weight:	433.56
Storage:	Powder: -20°C for 3 years In solvent: -80°C for 1 year Actual storage temperature shall be subject to the COA.



Biological Description

Description	Sodium oleoyl glutamate is a sodium salt oleoyl glutamate.
Targets(IC50)	Others

Preparing Stock Solutions

	1mg	5mg	10mg
1 mM	2.3065 mL	11.5324 mL	23.0649 mL
5 mM	0.4613 mL	2.3065 mL	4.613 mL
10 mM	0.2306 mL	1.1532 mL	2.3065 mL
50 mM	0.0461 mL	0.2306 mL	0.4613 mL

Please select the appropriate solvent to prepare the stock solution, according to the solubility of the product in different solvents. Please use it as soon as possible.

Note: The dilution table applies only to solid products. For liquid products, please calculate the stock solution based on the stated concentration and/or density.

Reference

Peter B, Fanucchi S, Dirr HW. A conserved cationic motif enhances membrane binding and insertion of the chloride intracellular channel protein 1 transmembrane domain. *Eur Biophys J.* 2014 Sep;43(8-9):405-14. doi: 10.1007/s00249-014-0972-y. Epub 2014 Jun 13. PubMed PMID: 24925575.

Mitrakos P, Macdonald PM. Domains in cationic lipid plus polyelectrolyte bilayer membranes: detection and characterization via 2H nuclear magnetic resonance. *Biochemistry.* 1997 Nov 4;36(44):13646-56. PubMed PMID: 9354634.

Coderre TJ, Yashpal K. Intracellular messengers contributing to persistent nociception and hyperalgesia induced by L-glutamate and substance P in the rat formalin pain model. *Eur J Neurosci.* 1994 Aug 1;6(8):1328-34. PubMed PMID: 7526941.

Casado M, Zafra F, Aragón C, Giménez C. Activation of high-affinity uptake of glutamate by phorbol esters in primary glial cell cultures. *J Neurochem.* 1991 Oct;57(4):1185-90. PubMed PMID: 1680157.

Inhibitor · Natural Compounds · Compound Libraries · Recombinant Proteins

This product is for Research Use Only · Not for Human or Veterinary or Therapeutic Use

Tel:781-999-4286 E_mail:info@targetmol.com Address:34 Washington Street,Wellesley Hills,MA 02481