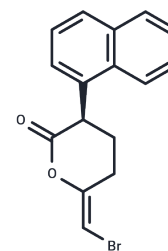


(R)-Bromo-enol lactone

Chemical Properties

| | |
|-------------------|--|
| CAS No. : | 478288-90-3 |
| Formula: | C ₁₆ H ₁₃ BrO ₂ |
| Molecular Weight: | 317.18 |
| Storage: | Powder: -20°C for 3 years In solvent: -80°C for 1 year <small>Actual storage temperature shall be subject to the COA.</small> |



Biological Description

| | |
|---------------|---|
| Description | The phospholipases are an extensive family of lipid hydrolases that function in cell signaling, digestion, membrane remodeling, and as venom components. The calcium-independent phospholipases (iPLA2) are a PLA2 subfamily closely associated with the release of arachidonic acid in response to physiologic stimuli. (R)-Bromo-enol lactone ((R)-BEL) is an irreversible, chiral, mechanism-based inhibitor of calcium-independent phospholipase γ (iPLA2 γ). Unlike (S)-BEL, (R)-BEL does not inhibit iPLA2 β except at high doses of 20–30 μ M. (R)-BEL inhibits human recombinant iPLA2 γ with an IC ₅₀ of approximately 0.6 μ M. |
| Targets(IC50) | Others,Phospholipase |

Solubility Information

| | |
|------------|--|
| Solubility | PBS (pH 7.2): 0.05 mg/mL (0.16 mM),Sonication is recommended. DMSO: 25 mg/mL (78.82 mM),Sonication is recommended. Ethanol: 5 mg/mL (15.76 mM),Sonication is recommended. DMF: 50 mg/mL (157.64 mM),Sonication is recommended. (< 1 mg/ml refers to the product slightly soluble or insoluble) |
|------------|--|

Preparing Stock Solutions

| | 1mg | 5mg | 10mg |
|-------|------------|------------|-------------|
| 1 mM | 3.1528 mL | 15.7639 mL | 31.5278 mL |
| 5 mM | 0.6306 mL | 3.1528 mL | 6.3056 mL |
| 10 mM | 0.3153 mL | 1.5764 mL | 3.1528 mL |
| 50 mM | 0.0631 mL | 0.3153 mL | 0.6306 mL |

Please select the appropriate solvent to prepare the stock solution, according to the solubility of the product in different solvents. Please use it as soon as possible.

Note: The dilution table applies only to solid products. For liquid products, please calculate the stock solution based on the stated concentration and/or density.

Inhibitor · Natural Compounds · Compound Libraries · Recombinant Proteins

This product is for Research Use Only · Not for Human or Veterinary or Therapeutic Use

Tel:781-999-4286 E_mail:info@targetmol.com Address:34 Washington Street,Wellesley Hills,MA 02481