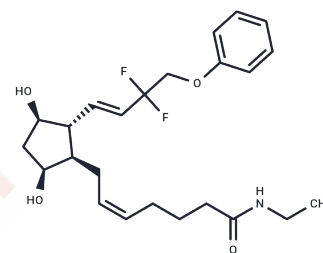


Tafluprost ethyl amide

Chemical Properties

CAS No. :	1185851-52-8
Formula:	C ₂₄ H ₃₃ F ₂ N ₀ O ₄
Molecular Weight:	437.52
Storage:	Powder: -20°C for 3 years In solvent: -80°C for 1 year Actual storage temperature shall be subject to the COA.



Biological Description

Description	Tafluprost ethyl amide, a prostaglandin derivative, reduces intraocular pressure (IOP) and affects eyelash growth, making it suitable for use in anti-glaucoma eye drops and cosmetics.
Targets(IC50)	Others, Prostaglandin Receptor

Solubility Information

Solubility	DMSO: 30 mg/mL (68.57 mM), Sonication is recommended. DMF: 30 mg/mL (68.57 mM), Sonication is recommended. Ethanol: 30 mg/mL (68.57 mM), Sonication is recommended. (< 1 mg/ml refers to the product slightly soluble or insoluble)
------------	---

Preparing Stock Solutions

	1mg	5mg	10mg
1 mM	2.2856 mL	11.428 mL	22.8561 mL
5 mM	0.4571 mL	2.2856 mL	4.5712 mL
10 mM	0.2286 mL	1.1428 mL	2.2856 mL
50 mM	0.0457 mL	0.2286 mL	0.4571 mL

Please select the appropriate solvent to prepare the stock solution, according to the solubility of the product in different solvents. Please use it as soon as possible.

Note: The dilution table applies only to solid products. For liquid products, please calculate the stock solution based on the stated concentration and/or density.

Inhibitor · Natural Compounds · Compound Libraries · Recombinant Proteins

This product is for Research Use Only · Not for Human or Veterinary or Therapeutic Use

Tel: 781-999-4286 E_mail: info@targetmol.com Address: 34 Washington Street, Wellesley Hills, MA 02481