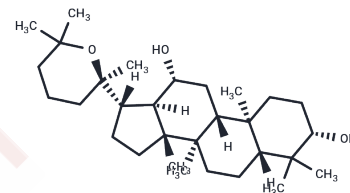


## Panaxadiol

## Chemical Properties

CAS No. :	19666-76-3
Formula:	C30H52O3
Molecular Weight:	460.73
Storage:	Keep away from direct sunlight, Keep away from moisture Powder: -20°C for 3 years   In solvent: -80°C for 1 year <i>Actual storage temperature shall be subject to the COA.</i>



## Biological Description

Description	Panaxadiol (20(R)-Panaxadiol) is a novel antitumor agent extracted from the Chinese medicinal herb Panax ginseng.
Targets(IC50)	HIF/HIF Prolyl-Hydroxylase, STAT, PD-1/PD-L1

## Solubility Information

Solubility	Ethanol: 20 mg/mL (43.41 mM), Sonication is recommended. ( $< 1$ mg/ml refers to the product slightly soluble or insoluble)
In vivo Formulation	10% DMSO+40% PEG300+5% Tween 80+45% Saline: 2 mg/mL (4.34 mM), Sonication is recommended. <i>Please add the solvents sequentially, clarifying the solution as much as possible before adding the next one. Dissolve by heating and/or sonication if necessary. Working solution is recommended to be prepared and used immediately. The formulation provided above is for reference purposes only. In vivo formulations may vary and should be modified based on specific experimental conditions.</i>

## Preparing Stock Solutions

	1mg	5mg	10mg
1 mM	2.1705 mL	10.8523 mL	21.7047 mL
5 mM	0.4341 mL	2.1705 mL	4.3409 mL
10 mM	0.217 mL	1.0852 mL	2.1705 mL
50 mM	0.0434 mL	0.217 mL	0.4341 mL

Please select the appropriate solvent to prepare the stock solution, according to the solubility of the product in different solvents. Please use it as soon as possible.

Note: The dilution table applies only to solid products. For liquid products, please calculate the stock solution based on the stated concentration and/or density.

Reference

Lin X, et al. Exp Hematol. 2015 May;43(5):364-73.

**Inhibitor · Natural Compounds · Compound Libraries · Recombinant Proteins**

This product is for Research Use Only · Not for Human or Veterinary or Therapeutic Use

Tel:781-999-4286 E\_mail:info@targetmol.com Address:34 Washington Street,Wellesley Hills,MA 02481