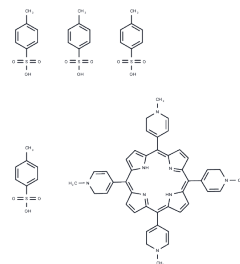


TMPyP4 tosylate

Chemical Properties

| | |
|-------------------|---|
| CAS No. : | 36951-72-1 |
| Formula: | C72H66N8O12S4 |
| Molecular Weight: | 1363.6 |
| Storage: | Powder: -20°C for 3 years In solvent: -80°C for 1 year Actual storage temperature shall be subject to the COA. |



Biological Description

| | |
|---------------|---|
| Description | TMPyP4 tosylate (TMP 1363) is a quadruplex-specific ligand and telomerase inhibitor that exhibits antitumor effects in osteosarcoma cell lines. |
| Targets(IC50) | Cholinesterase (ChE),DNA/RNA Synthesis,SARS-CoV,Telomerase |

Solubility Information

| | |
|---------------------|--|
| Solubility | H2O: 6.2 mg/mL (4.55 mM),Sonication is recommended. DMSO: 18.33 mg/mL (13.44 mM),Sonication is recommended. (< 1 mg/ml refers to the product slightly soluble or insoluble) |
| In vivo Formulation | 10% DMSO+40% PEG300+5% Tween 80+45% Saline: 1 mg/mL (0.73 mM),Sonication is recommended. <i>Please add the solvents sequentially, clarifying the solution as much as possible before adding the next one. Dissolve by heating and/or sonication if necessary. Working solution is recommended to be prepared and used immediately. The formulation provided above is for reference purposes only. In vivo formulations may vary and should be modified based on specific experimental conditions.</i> |

Preparing Stock Solutions

| | 1mg | 5mg | 10mg |
|-------|-----------|-----------|-----------|
| 1 mM | 0.7334 mL | 3.6668 mL | 7.3335 mL |
| 5 mM | 0.1467 mL | 0.7334 mL | 1.4667 mL |
| 10 mM | 0.0733 mL | 0.3667 mL | 0.7334 mL |
| 50 mM | 0.0147 mL | 0.0733 mL | 0.1467 mL |

Please select the appropriate solvent to prepare the stock solution, according to the solubility of the product in different solvents. Please use it as soon as possible.

Note: The dilution table applies only to solid products. For liquid products, please calculate the stock solution based on the stated concentration and/or density.

Reference

Fujimori J, et al. Antitumor effects of telomerase inhibitor TMPyP4 in osteosarcoma cell lines. J Orthop Res. 2011 Nov;29(11):1707-11.

Chen H, et al. Insuline-like growth factor type I selectively binds to G-quadruplex structures. Biochim Biophys Acta Gen Subj. 2019 Jan;1863(1):31-38.

Inhibitor · Natural Compounds · Compound Libraries · Recombinant Proteins

This product is for Research Use Only· Not for Human or Veterinary or Therapeutic Use

Tel:781-999-4286 E_mail:info@targetmol.com Address:34 Washington Street,Wellesley Hills,MA 02481