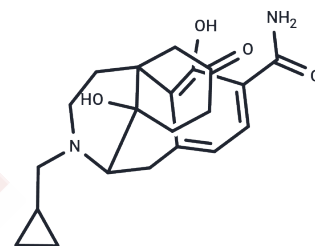


## Iso-Samidorphane

## Chemical Properties

CAS No. : 1402346-80-8  
 Formula: C<sub>21</sub>H<sub>26</sub>N<sub>2</sub>O<sub>4</sub>  
 Molecular Weight: 370.44  
 Storage: Powder: -20°C for 3 years | In solvent: -80°C for 1 year  
 Actual storage temperature shall be subject to the COA.



## Biological Description

Description	Iso-Samidorphane is a biochemical reagent that can be used in biological experiments.
Targets(IC50)	Others

## Preparing Stock Solutions

	1mg	5mg	10mg
1 mM	2.6995 mL	13.4975 mL	26.9949 mL
5 mM	0.5399 mL	2.6995 mL	5.399 mL
10 mM	0.2699 mL	1.3497 mL	2.6995 mL
50 mM	0.054 mL	0.2699 mL	0.5399 mL

Please select the appropriate solvent to prepare the stock solution, according to the solubility of the product in different solvents. Please use it as soon as possible.

Note: The dilution table applies only to solid products. For liquid products, please calculate the stock solution based on the stated concentration and/or density.

## Reference

He Q, et al. Discovery of an M-Substituted N-Cyclopropylmethyl-7 $\alpha$ -phenyl-6,14-endoethanotetrahydronorthebaine as a Selective, Potent, and Orally Active  $\kappa$ -Opioid Receptor Agonist with an Improved Central Nervous System Safety Profile. J Med Chem. 2021 Aug 26;64(16):12414-12433.

Inhibitor · Natural Compounds · Compound Libraries · Recombinant Proteins

This product is for Research Use Only · Not for Human or Veterinary or Therapeutic Use

Tel: 781-999-4286 E\_mail: info@targetmol.com Address: 34 Washington Street, Wellesley Hills, MA 02481