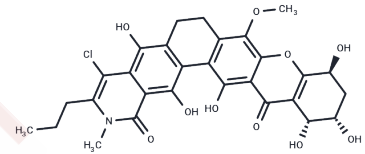


## Kibdelone C

## Chemical Properties

CAS No. :	934464-79-6
Formula:	C <sub>29</sub> H <sub>28</sub> ClNO <sub>10</sub>
Molecular Weight:	585.99
Storage:	Powder: -20°C for 3 years   In solvent: -80°C for 1 year Actual storage temperature shall be subject to the COA.



## Biological Description

Description	Kibdelone C is a member of a family of natural heterocyclic polyketides first isolated from a soil actinomycete, Kibdelosporangium. Kibdelones have been described as having potent and selective cytotoxicity against a panel of human tumor cell lines, and kibdelone C has low nanomolar effectiveness in these assays. Kibdelone C disrupts the actin cytoskeleton without directly binding actin or affecting its polymerization in vitro.
Targets(IC50)	Others

## Solubility Information

Solubility	DMSO: Soluble ( $< 1$ mg/ml refers to the product slightly soluble or insoluble)
------------	---

## Preparing Stock Solutions

	1mg	5mg	10mg
1 mM	1.7065 mL	8.5326 mL	17.0651 mL
5 mM	0.3413 mL	1.7065 mL	3.413 mL
10 mM	0.1707 mL	0.8533 mL	1.7065 mL
50 mM	0.0341 mL	0.1707 mL	0.3413 mL

Please select the appropriate solvent to prepare the stock solution, according to the solubility of the product in different solvents. Please use it as soon as possible.

Note: The dilution table applies only to solid products. For liquid products, please calculate the stock solution based on the stated concentration and/or density.

Inhibitor · Natural Compounds · Compound Libraries · Recombinant Proteins

This product is for Research Use Only · Not for Human or Veterinary or Therapeutic Use

Tel: 781-999-4286 E\_mail: info@targetmol.com Address: 34 Washington Street, Wellesley Hills, MA 02481