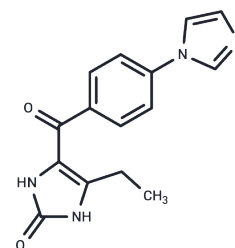


CK 2289

## Chemical Properties

CAS No. : 101183-99-7  
 Formula: C<sub>15</sub>H<sub>14</sub>N<sub>4</sub>O<sub>2</sub>  
 Molecular Weight: 282.3  
 Storage: Powder: -20°C for 3 years | In solvent: -80°C for 1 year  
 Actual storage temperature shall be subject to the COA.



## Biological Description

Description	CK 2289 is an inhibitor of type III cyclic 3'5' -adenosine monophosphate phosphodiesterase with potential use in the treatment of congestive heart failure.
Targets(IC50)	Others

## Preparing Stock Solutions

	1mg	5mg	10mg
1 mM	3.5423 mL	17.7117 mL	35.4233 mL
5 mM	0.7085 mL	3.5423 mL	7.0847 mL
10 mM	0.3542 mL	1.7712 mL	3.5423 mL
50 mM	0.0708 mL	0.3542 mL	0.7085 mL

Please select the appropriate solvent to prepare the stock solution, according to the solubility of the product in different solvents. Please use it as soon as possible.

Note: The dilution table applies only to solid products. For liquid products, please calculate the stock solution based on the stated concentration and/or density.

## Reference

- Chen W, Hu XY, Lu HN. [Impacts of Biochar Input on Mineralization of Native Soil Organic Carbon]. Huan Jing Ke Xue. 2015 Jun;36(6):2300-5. Chinese. PubMed PMID: 26387339.
- Avesani CM, Draibe SA, Kamimura MA, Cendoroglo M, Pedrosa A, Castro ML, Cuppari L. Assessment of body composition by dual energy X-ray absorptiometry, skinfold thickness and creatinine kinetics in chronic kidney disease patients. Nephrol Dial Transplant. 2004 Sep;19(9):2289-95. Epub 2004 Jul 13. PubMed PMID: 15252158.
- Greenberg SS, Paul J, Luisi A. Pharmacological comparison of CK-2289, an inodilator agent, with milrinone and enoximone. Arch Int Pharmacodyn Ther. 1991 Jan-Feb;309:103-24. PubMed PMID: 1653560.

**Inhibitor · Natural Compounds · Compound Libraries · Recombinant Proteins**

This product is for Research Use Only · Not for Human or Veterinary or Therapeutic Use

Tel:781-999-4286 E\_mail:info@targetmol.com Address:34 Washington Street,Wellesley Hills,MA 02481