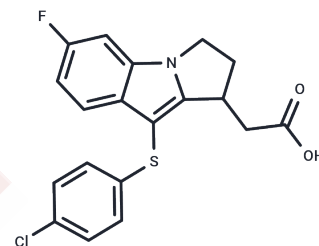


## L 888607 Racemate

## Chemical Properties

|                   |   |
|-------------------|---|
| CAS No. :         | 1030017-51-6  |
| Formula:          | C <sub>19</sub> H <sub>15</sub> ClFNO <sub>2</sub> S  |
| Molecular Weight: | 375.84  |
| Storage:          | Powder: -20°C for 3 years   In solvent: -80°C for 1 year<br>Actual storage temperature shall be subject to the COA. |



## Biological Description

|               |  |
|---------------|--|
| Description   | L 888607 Racemate is a selective antagonist of the prostaglandin D2 receptor subtype 1 (DP1) with $K_i$ values of 132 nM and 17 nM for DP1 and the thromboxane A2 receptor (TP), respectively. |
| Targets(IC50) | Aurora Kinase, Prostaglandin Receptor  |
| In vitro      | L 888607 Racemate is actually 8-fold more effective on the TP receptor ( $K_i = 17$ nM). L 888607 Racemate maintains a modest binding affinity for the DP1 receptor ( $K_i = 132$ nM).         |

## Solubility Information

|            |  |
|------------|--|
| Solubility | DMSO: 6 mg/mL (15.96 mM), Sonication is recommended.<br>( $< 1$ mg/ml refers to the product slightly soluble or insoluble) |
|------------|--|

## Preparing Stock Solutions

|       | 1mg       | 5mg        | 10mg       |
|-------|-----------|------------|------------|
| 1 mM  | 2.6607 mL | 13.3035 mL | 26.6071 mL |
| 5 mM  | 0.5321 mL | 2.6607 mL  | 5.3214 mL  |
| 10 mM | 0.2661 mL | 1.3304 mL  | 2.6607 mL  |
| 50 mM | 0.0532 mL | 0.2661 mL  | 0.5321 mL  |

Please select the appropriate solvent to prepare the stock solution, according to the solubility of the product in different solvents. Please use it as soon as possible.

Note: The dilution table applies only to solid products. For liquid products, please calculate the stock solution based on the stated concentration and/or density.

Reference

Beaulieu C, et al. Identification of prostaglandin D2 receptor antagonists based on a tetrahydropyridoindole scaffold. Bioorg Med Chem Lett. 2008 Apr 15;18(8):2696-700.

**Inhibitor · Natural Compounds · Compound Libraries · Recombinant Proteins**

This product is for Research Use Only · Not for Human or Veterinary or Therapeutic Use

Tel:781-999-4286 E\_mail:info@targetmol.com Address:34 Washington Street,Wellesley Hills,MA 02481