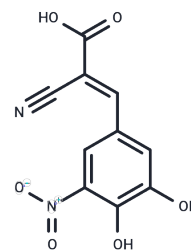


Entacapone acid

Chemical Properties

CAS No. :	160391-70-8
Formula:	C ₁₀ H ₆ N ₂ O ₆
Molecular Weight:	250.16
Storage:	Powder: -20°C for 3 years In solvent: -80°C for 1 year Actual storage temperature shall be subject to the COA.



Biological Description

Description	Entacapone acid (AG 1290) is a selective and reversible inhibitor of catechol-O-methyltransferase(COMT).
Targets(IC50)	c-Met/HGFR,Transferase

Solubility Information

Solubility	DMSO: 55 mg/mL (219.86 mM),Sonication is recommended. (< 1 mg/ml refers to the product slightly soluble or insoluble)
------------	--

Preparing Stock Solutions

	1mg	5mg	10mg
1 mM	3.9974 mL	19.9872 mL	39.9744 mL
5 mM	0.7995 mL	3.9974 mL	7.9949 mL
10 mM	0.3997 mL	1.9987 mL	3.9974 mL
50 mM	0.0799 mL	0.3997 mL	0.7995 mL

Please select the appropriate solvent to prepare the stock solution, according to the solubility of the product in different solvents. Please use it as soon as possible.

Note: The dilution table applies only to solid products. For liquid products, please calculate the stock solution based on the stated concentration and/or density.

Reference

Belal F, et al. Micellar HPLC-UV method for the simultaneous determination of levodopa, carbidopa and entacapone in pharmaceuticals and human plasma. *J Chromatogr B Analyt Technol Biomed Life Sci.* 2018 May 22; 1091:36-45.

Engelbrecht I, Petzer JP, Petzer A. Nitrocatechol Derivatives of Chalcone as Inhibitors of Monoamine Oxidase and Catechol-O-Methyltransferase. *Cent Nerv Syst Agents Med Chem.* 2018 Apr 26.

Grünig D, et al. Effect of the catechol-O-methyltransferase inhibitors tolcapone and entacapone on fatty acid metabolism in HepaRG cells. *Toxicol Sci.* 2018 Apr 23.

Ware BR, et al. Exploring Chronic Drug Effects on Microengineered Human Liver Cultures Using Global Gene Expression Profiling. *Toxicol Sci.* 2017 Jun 1;157(2):387-398.

Inhibitor · Natural Compounds · Compound Libraries · Recombinant Proteins

This product is for Research Use Only · Not for Human or Veterinary or Therapeutic Use

Tel:781-999-4286 E_mail:info@targetmol.com Address:34 Washington Street,Wellesley Hills,MA 02481