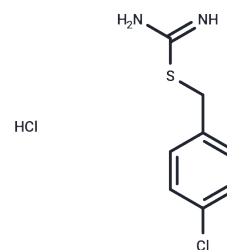


MP265

## Chemical Properties

CAS No. : 544-47-8  
 Formula: C<sub>8</sub>H<sub>10</sub>Cl<sub>2</sub>N<sub>2</sub>S  
 Molecular Weight: 237.15  
 Storage: Powder: -20°C for 3 years | In solvent: -80°C for 1 year  
 Actual storage temperature shall be subject to the COA.



## Biological Description

|               |  |
|---------------|--|
| Description   | MP265 disrupts the MreB cytoskeleton and has antiproliferative effects.  |
| Targets(IC50) | Others,Antibacterial   |
| In vitro      | In MCF-7 cells, conjugate MP265 showed higher antiproliferative effect than paclitaxel alone. Receptor saturation tests showed that the unconjugated peptide analog of GnRH decreased efficacy of conjugate MP265 in concentration- and time-dependent manner [1]. |

## Solubility Information

|            |   |
|------------|---|
| Solubility | DMSO: 60 mg/mL (253 mM),Sonication is recommended.<br>(< 1 mg/ml refers to the product slightly soluble or insoluble) |
|------------|---|

## Preparing Stock Solutions

|       | 1mg       | 5mg        | 10mg       |
|-------|-----------|------------|------------|
| 1 mM  | 4.2167 mL | 21.0837 mL | 42.1674 mL |
| 5 mM  | 0.8433 mL | 4.2167 mL  | 8.4335 mL  |
| 10 mM | 0.4217 mL | 2.1084 mL  | 4.2167 mL  |
| 50 mM | 0.0843 mL | 0.4217 mL  | 0.8433 mL  |

Please select the appropriate solvent to prepare the stock solution, according to the solubility of the product in different solvents. Please use it as soon as possible.

Note: The dilution table applies only to solid products. For liquid products, please calculate the stock solution based on the stated concentration and/or density.

### Reference

Pribylova M, et al. Paclitaxel conjugation with the analog of the gonadotropin-releasing hormone as a targeting moiety. *Int J Pharm.* 2011 Aug 30;415(1-2):175-80.

Takacs CN, et al. MreB drives de novo rod morphogenesis in *Caulobacter crescentus* via remodeling of the cell wall. *J Bacteriol.* 2010 Mar;192(6):1671-84.

van den Ent F, et al. Bacterial actin MreB forms antiparallel double filaments. *Elife.* 2014 May 2;3:e02634.

Jin M, et al. The effect of inhibition of host MreB on the infection of thermophilic phage GVE2 in high temperature environment. *Sci Rep.* 2014 Apr 28;4:4823.

**Inhibitor · Natural Compounds · Compound Libraries · Recombinant Proteins**

This product is for Research Use Only · Not for Human or Veterinary or Therapeutic Use

Tel:781-999-4286 E\_mail:info@targetmol.com Address:34 Washington Street,Wellesley Hills,MA 02481