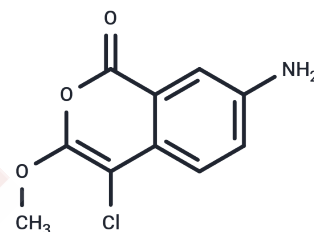


JLK6

## Chemical Properties

CAS No. : 62252-26-0  
 Formula: C<sub>10</sub>H<sub>8</sub>ClNO<sub>3</sub>  
 Molecular Weight: 225.63  
 Storage: Powder: -20°C for 3 years | In solvent: -80°C for 1 year  
*Actual storage temperature shall be subject to the COA.*



## Biological Description

Description	JLK6 was a gamma-secretase inhibitor that does not interfere with Notch signalling
Targets(IC50)	Beta Amyloid,Gamma-secretase
In vitro	JLK6 markedly reduced A $\beta$ secreted from HEK293 cells. Immunological characterization indicated that one fragment was labelled with a specific antibody against the Asp1 residue of A $\beta$ [1].

## Solubility Information

Solubility	DMSO: 22 mg/mL (97.5 mM),Sonication is recommended. Ethanol: 5 mg/mL (22.16 mM),Sonication is recommended. (< 1 mg/ml refers to the product slightly soluble or insoluble)
------------	--

## Preparing Stock Solutions

	1mg	5mg	10mg
1 mM	4.432 mL	22.1602 mL	44.3203 mL
5 mM	0.8864 mL	4.432 mL	8.8641 mL
10 mM	0.4432 mL	2.216 mL	4.432 mL
50 mM	0.0886 mL	0.4432 mL	0.8864 mL

Please select the appropriate solvent to prepare the stock solution, according to the solubility of the product in different solvents. Please use it as soon as possible.

Note: The dilution table applies only to solid products. For liquid products, please calculate the stock solution based on the stated concentration and/or density.

Reference

Petit A, Pasini A, Alves Da Costa C, et al. JLK isocoumarin inhibitors: Selective  $\gamma$ -secretase inhibitors that do not interfere with notch pathway in vitro or in vivo. Journal of neuroscience research, 2003, 74(3): 370-377.

**Inhibitor · Natural Compounds · Compound Libraries · Recombinant Proteins**

This product is for Research Use Only· Not for Human or Veterinary or Therapeutic Use

Tel:781-999-4286 E\_mail:info@targetmol.com Address:34 Washington Street,Wellesley Hills,MA 02481