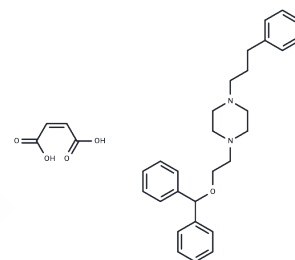


GBR-12935 maleate

Chemical Properties

CAS No. :	1349767-56-1
Formula:	C32H38N2O5
Molecular Weight:	530.665
Storage:	Powder: -20°C for 3 years In solvent: -80°C for 1 year Actual storage temperature shall be subject to the COA.



Biological Description

Description	GBR-12935 is a potent and selective dopamine reuptake inhibitor. It was originally developed in its 3H radiolabelled form for the purpose of mapping the distribution of dopaminergic neurons in the brain by selective labelling of dopamine transporter proteins. This has led to potential clinical uses in the diagnosis of Parkinson's disease, although selective radioligands such as loflupane (3H) are now available for this application. GBR-12935 is now widely used in animal research into Parkinson's disease and the dopamine pathways in the brain. (Source: http://en.wikipedia.org/wiki/GBR-12935).
Targets(IC50)	Others,Dopamine Receptor

Preparing Stock Solutions

	1mg	5mg	10mg
1 mM	1.8844 mL	9.4221 mL	18.8441 mL
5 mM	0.3769 mL	1.8844 mL	3.7688 mL
10 mM	0.1884 mL	0.9422 mL	1.8844 mL
50 mM	0.0377 mL	0.1884 mL	0.3769 mL

Please select the appropriate solvent to prepare the stock solution, according to the solubility of the product in different solvents. Please use it as soon as possible.

Note: The dilution table applies only to solid products. For liquid products, please calculate the stock solution based on the stated concentration and/or density.

Inhibitor · Natural Compounds · Compound Libraries · Recombinant Proteins

This product is for Research Use Only · Not for Human or Veterinary or Therapeutic Use

Tel:781-999-4286 E_mail:info@targetmol.com Address:34 Washington Street,Wellesley Hills,MA 02481