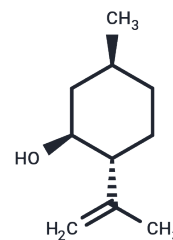


(+)-Isopulegol

Chemical Properties

CAS No. :	104870-56-6
Formula:	C ₁₀ H ₁₈ O
Molecular Weight:	154.25
Storage:	Keep away from direct sunlight Powder: -20°C for 3 years In solvent: -80°C for 1 year <small>Actual storage temperature shall be subject to the COA.</small>



Biological Description

Description	(+)-Isopulegol is a monoterpene from <i>Mentha canadensis</i> L.
Targets(IC50)	Parasite

Solubility Information

Solubility	DMSO: 10 mM, Sonication is recommended. (< 1 mg/ml refers to the product slightly soluble or insoluble)
------------	--

Preparing Stock Solutions

	1mg	5mg	10mg
1 mM	6.483 mL	32.4149 mL	64.8298 mL
5 mM	1.2966 mL	6.483 mL	12.966 mL
10 mM	0.6483 mL	3.2415 mL	6.483 mL
50 mM	0.1297 mL	0.6483 mL	1.2966 mL

Please select the appropriate solvent to prepare the stock solution, according to the solubility of the product in different solvents. Please use it as soon as possible.

Note: The dilution table applies only to solid products. For liquid products, please calculate the stock solution based on the stated concentration and/or density.

Inhibitor · Natural Compounds · Compound Libraries · Recombinant Proteins

This product is for Research Use Only · Not for Human or Veterinary or Therapeutic Use

Tel: 781-999-4286 E_mail: info@targetmol.com Address: 34 Washington Street, Wellesley Hills, MA 02481