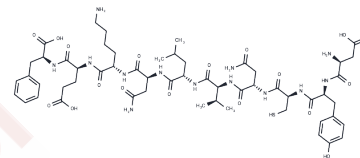


CEF14, EBV Rta Protein (28-37)

Chemical Properties

CAS No. :	216862-58-7
Formula:	C55H81N13O18S
Molecular Weight:	1244.37
Storage:	Keep away from moisture Powder: -20°C for 3 years In solvent: -80°C for 1 year <small>Actual storage temperature shall be subject to the COA.</small>



Biological Description

Description	CEF14, EBV Rta Protein (28-37), is the HLA A24-restricted epitope from the Epstein-Barr virus Rta Protein (28-37).
Targets(IC50)	Antifection

Solubility Information

Solubility	H2O: Soluble, (< 1 mg/ml refers to the product slightly soluble or insoluble)
------------	--

Preparing Stock Solutions

	1mg	5mg	10mg
1 mM	0.8036 mL	4.0181 mL	8.0362 mL
5 mM	0.1607 mL	0.8036 mL	1.6072 mL
10 mM	0.0804 mL	0.4018 mL	0.8036 mL
50 mM	0.0161 mL	0.0804 mL	0.1607 mL

Please select the appropriate solvent to prepare the stock solution, according to the solubility of the product in different solvents. Please use it as soon as possible.

Note: The dilution table applies only to solid products. For liquid products, please calculate the stock solution based on the stated concentration and/or density.

Inhibitor · Natural Compounds · Compound Libraries · Recombinant Proteins

This product is for Research Use Only · Not for Human or Veterinary or Therapeutic Use

Tel:781-999-4286 E_mail:info@targetmol.com Address:34 Washington Street,Wellesley Hills,MA 02481