

Cresyl Violet perchlorate

Chemical Properties

CAS No. : 41830-80-2

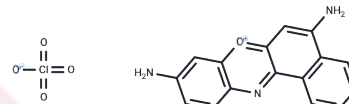
Formula: C₁₆H₁₂ClN₃O₅

Molecular Weight: 361.74

Keep away from direct sunlight

Storage: Powder: -20°C for 3 years | In solvent: -80°C for 1 year

Actual storage temperature shall be subject to the COA.



Biological Description

Description	Cresyl Violet perchlorate is a red fluorescent stain employed for neuron staining.
Targets(IC50)	Others
In vitro	The estimated total number of SG neurons is 27,485±3251 and 26,705±1823 in PV and Cresyl Violet perchlorate (CV) stained sections, respectively, with no significant difference (p=0.552). CV staining is simpler and more cost-effective for estimating neuronal numbers. Total RC volume is 2.162±0.35 mm ³ in CV stained sections and 1.82 ±0.33 mm ³ in PV immunostained sections. The volume of neurons is 3487.63±951 μm ³ in CV stained sections and 3740.1±784 μm ³ in PV immunostained sections. Similarly, the volume of the neuronal nucleus is 131.68±50 μm ³ in CV stained sections and 126.51±33 μm ³ in PV immunostained sections.

Preparing Stock Solutions

	1mg	5mg	10mg
1 mM	2.7644 mL	13.8221 mL	27.6442 mL
5 mM	0.5529 mL	2.7644 mL	5.5288 mL
10 mM	0.2764 mL	1.3822 mL	2.7644 mL
50 mM	0.0553 mL	0.2764 mL	0.5529 mL

Please select the appropriate solvent to prepare the stock solution, according to the solubility of the product in different solvents. Please use it as soon as possible.

Note: The dilution table applies only to solid products. For liquid products, please calculate the stock solution based on the stated concentration and/or density.

Reference

Kaur C, et al. Comparison of unbiased stereological estimation of total number of cresyl violet stained neurons and parvalbumin positive neurons in the adult human spiral ganglion. J Chem Neuroanat. 2017 Jun 23. pii: S0891-0618 (17)30037-6.

Inhibitor · Natural Compounds · Compound Libraries · Recombinant Proteins

This product is for Research Use Only· Not for Human or Veterinary or Therapeutic Use

Tel:781-999-4286 E_mail:info@targetmol.com Address:34 Washington Street,Wellesley Hills,MA 02481