

LEP(116-130)(mouse)TFA(258276-95-8 free base)

## Chemical Properties

CAS No. :

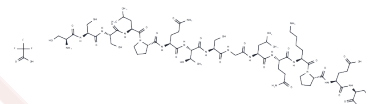
Formula: C66H110F3N19O26S

Molecular Weight: 1674.77

Keep away from moisture

Storage: Powder: -20°C for 3 years | In solvent: -80°C for 1 year

Actual storage temperature shall be subject to the COA.



## Biological Description

Description	LEP(116-130)(mouse) is a synthetic leptin peptide fragment.
Targets(IC50)	Complement System
In vivo	Compared with vehicle-injected control mice, LEP-(116-130) (1 mg, i.p.) results in a reduced rate of body weight gain in the presence of increased food intake. LEP-(116-130) significantly reduces blood glucose levels by appr 100 mg/dL.

## Solubility Information

Solubility	H2O: 50 mg/mL (29.85 mM),Sonication is recommended. (< 1 mg/ml refers to the product slightly soluble or insoluble)
------------	--

## Preparing Stock Solutions

	1mg	5mg	10mg
1 mM	0.5971 mL	2.9855 mL	5.971 mL
5 mM	0.1194 mL	0.5971 mL	1.1942 mL
10 mM	0.0597 mL	0.2985 mL	0.5971 mL
50 mM	0.0119 mL	0.0597 mL	0.1194 mL

Please select the appropriate solvent to prepare the stock solution, according to the solubility of the product in different solvents. Please use it as soon as possible.

Note: The dilution table applies only to solid products. For liquid products, please calculate the stock solution based on the stated concentration and/or density.

Reference

Grasso P, et al. Inhibitory effects of leptin-related synthetic peptide 116-130 on food intake and body weight gain in female C57BL/6J ob/ob mice may not be mediated by peptide activation of the long isoform of the leptin receptor. Diabetes. 1999 Nov;48(11):2204-9.

**Inhibitor · Natural Compounds · Compound Libraries · Recombinant Proteins**

This product is for Research Use Only · Not for Human or Veterinary or Therapeutic Use

Tel:781-999-4286 E\_mail:info@targetmol.com Address:34 Washington Street,Wellesley Hills,MA 02481