

10-PAHSA

Chemical Properties

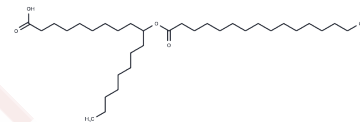
CAS No. : 1636134-73-0

Formula: C34H66O4

Molecular Weight: 538.89

Storage: Powder: -20°C for 3 years | In solvent: -80°C for 1 year

Actual storage temperature shall be subject to the COA.



Biological Description

Description	10-PAHSA is a newly identified endogenous lipid that belongs to a collection of branched fatty acid esters of hydroxy fatty acids (FAHFAs). It is a FAHFA in which palmitic acid is esterified to 10-hydroxy stearic acid. Among the FAHFA family members, PAHSAs are the most abundant in the adipose tissue of glucose tolerant AG4OX mice, which overexpress the Glut4 glucose transporter specifically in adipose tissue. As other FAHFAs improve glucose tolerance, stimulate insulin secretion, and have anti-inflammatory effects, 10-PAHSA may be a bioactive lipid with roles in metabolic syndrome and inflammation.
Targets(IC50)	Others

Solubility Information

Solubility	DMF: 20 mg/mL (37.11 mM),Sonication is recommended. DMSO: 15 mg/mL (27.83 mM),Sonication is recommended. Ethanol: 20 mg/mL (37.11 mM),Sonication is recommended. Ethanol:PBS(pH 7.2) (1:1): 0.5 mg/mL (0.93 mM),Sonication is recommended. (< 1 mg/ml refers to the product slightly soluble or insoluble)
------------	--

Preparing Stock Solutions

	1mg	5mg	10mg
1 mM	1.8557 mL	9.2783 mL	18.5567 mL
5 mM	0.3711 mL	1.8557 mL	3.7113 mL
10 mM	0.1856 mL	0.9278 mL	1.8557 mL
50 mM	0.0371 mL	0.1856 mL	0.3711 mL

Please select the appropriate solvent to prepare the stock solution, according to the solubility of the product in different solvents. Please use it as soon as possible.

Note: The dilution table applies only to solid products. For liquid products, please calculate the stock solution based on the stated concentration and/or density.

Inhibitor · Natural Compounds · Compound Libraries · Recombinant Proteins

This product is for Research Use Only · Not for Human or Veterinary or Therapeutic Use

Tel:781-999-4286 E_mail:info@targetmol.com Address:34 Washington Street,Wellesley Hills,MA 02481