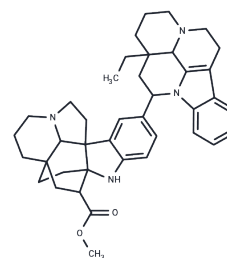


Kopsoffine

Chemical Properties

CAS No. : 89783-67-5
 Formula: C₄₀H₄₈N₄O₂
 Molecular Weight: 616.85
 Storage: Powder: -20°C for 3 years | In solvent: -80°C for 1 year
 Actual storage temperature shall be subject to the COA.



Biological Description

Description	Kopsoffine is a new dimeric indole alkaloid of pleiomutine type from <i>kopsia officinalis</i> .
Targets(IC50)	Others

Preparing Stock Solutions

	1mg	5mg	10mg
1 mM	1.6211 mL	8.1057 mL	16.2114 mL
5 mM	0.3242 mL	1.6211 mL	3.2423 mL
10 mM	0.1621 mL	0.8106 mL	1.6211 mL
50 mM	0.0324 mL	0.1621 mL	0.3242 mL

Please select the appropriate solvent to prepare the stock solution, according to the solubility of the product in different solvents. Please use it as soon as possible.

Note: The dilution table applies only to solid products. For liquid products, please calculate the stock solution based on the stated concentration and/or density.

Reference

Wang ZW, Shi XJ, Mu Y, Fang L, Chen Y, Lin YL. Three novel indole alkaloids from *Kopsia officinalis*. *Fitoterapia*. 2017 Jun;119:8-11. doi: 10.1016/j.fitote.2017.01.017. Epub 2017 Mar 28. PubMed PMID: 28363506.

Inhibitor · Natural Compounds · Compound Libraries · Recombinant Proteins

This product is for Research Use Only · Not for Human or Veterinary or Therapeutic Use

Tel:781-999-4286 E_mail:info@targetmol.com Address:34 Washington Street,Wellesley Hills,MA 02481