

## BCN-SS-amine

## Chemical Properties

CAS No. : 1435784-65-8

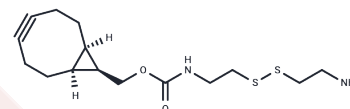
Formula: C<sub>15</sub>H<sub>24</sub>N<sub>2</sub>O<sub>2</sub>S<sub>2</sub>

Molecular Weight: 328.49

Keep away from direct sunlight

Storage: Powder: -20°C for 3 years | In solvent: -80°C for 1 year

Actual storage temperature shall be subject to the COA.



## Biological Description

Description	BCN-SS-amine is a cleavable linker essential in the synthesis of antibody-drug conjugates (ADC). It connects cytotoxic drugs to antibodies, allowing for precise delivery to targeted cells or proteins. The cleavable nature ensures controlled drug release, thereby optimizing the effectiveness of ADCs.
Targets(IC50)	ADC Linker, PROTAC Linker
In vitro	ADCs consist of an antibody linked to an ADC cytotoxin via an ADC linker[1].

## Preparing Stock Solutions

	1mg	5mg	10mg
1 mM	3.0442 mL	15.2212 mL	30.4423 mL
5 mM	0.6088 mL	3.0442 mL	6.0885 mL
10 mM	0.3044 mL	1.5221 mL	3.0442 mL
50 mM	0.0609 mL	0.3044 mL	0.6088 mL

Please select the appropriate solvent to prepare the stock solution, according to the solubility of the product in different solvents. Please use it as soon as possible.

Note: The dilution table applies only to solid products. For liquid products, please calculate the stock solution based on the stated concentration and/or density.

## Reference

Beck A, et al. Strategies and challenges for the next generation of antibody-drug conjugates. Nat Rev Drug Discov. 2017 May;16(5):315-337.

**Inhibitor · Natural Compounds · Compound Libraries · Recombinant Proteins**

This product is for Research Use Only · Not for Human or Veterinary or Therapeutic Use

Tel:781-999-4286 E\_mail:info@targetmol.com Address:34 Washington Street,Wellesley Hills,MA 02481