

Cargutocin

Chemical Properties

CAS No. : 33605-67-3

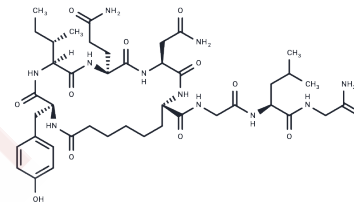
Formula: C42H65N11O12

Molecular Weight: 916.03

Keep away from moisture

Storage: Powder: -20°C for 3 years | In solvent: -80°C for 1 year

Actual storage temperature shall be subject to the COA.



Biological Description

Description	Cargutocin is a biochemical.
Targets(IC50)	Oxytocin Receptor

Preparing Stock Solutions

	1mg	5mg	10mg
1 mM	1.0917 mL	5.4583 mL	10.9167 mL
5 mM	0.2183 mL	1.0917 mL	2.1833 mL
10 mM	0.1092 mL	0.5458 mL	1.0917 mL
50 mM	0.0218 mL	0.1092 mL	0.2183 mL

Please select the appropriate solvent to prepare the stock solution, according to the solubility of the product in different solvents. Please use it as soon as possible.

Note: The dilution table applies only to solid products. For liquid products, please calculate the stock solution based on the stated concentration and/or density.

Reference

Caceda SI, Ramos RR, Saborido CM. Pharmacoeconomic study comparing carbetocin with oxytocin for the prevention of hemorrhage following cesarean delivery in Lima, Peru. *J Comp Eff Res*. 2018 Jan;7(1):49-55. doi: 10.2217/ce-2017-0012. Epub 2017 Dec 21. PubMed PMID: 29264934.

Muggleton E. Oxytocin Study Raises Concerns About Carbetocin Use. *Anesth Analg*. 2017 Dec 11. doi: 10.1213/ANE.0000000000002710. [Epub ahead of print] PubMed PMID: 29239961.

Høgstedt UB, Østergaard J, Weiss T, Sjögren H, van de Weert M. Manipulating Aggregation Behavior of the Uncharged Peptide Carbetocin. *J Pharm Sci*. 2018 Mar;107(3):838-847. doi: 10.1016/j.xphs.2017.11.008. Epub 2017 Nov 21. PubMed PMID: 29162423.

Voon HY, Shafie AA, Bujang MA, Suharjono HN. Cost effectiveness analysis of carbetocin during cesarean section in a high volume maternity unit. *J Obstet Gynaecol Res*. 2018 Jan;44(1):109-116. doi: 10.1111/jog.13486. Epub 2017 Oct 13. PubMed PMID: 29027315.

Inhibitor · Natural Compounds · Compound Libraries · Recombinant Proteins

This product is for Research Use Only · Not for Human or Veterinary or Therapeutic Use

Tel:781-999-4286 E_mail:info@targetmol.com Address:34 Washington Street,Wellesley Hills,MA 02481