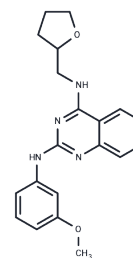


LCH-7749944

Chemical Properties

CAS No. : 796888-12-5
 Formula: C₂₀H₂₂N₄O₂
 Molecular Weight: 350.41
 Storage: Powder: -20°C for 3 years | In solvent: -80°C for 1 year
 Actual storage temperature shall be subject to the COA.



Biological Description

Description	LCH-7749944 (GNF-PF-2356) is a potent PAK4 inhibitor with an IC ₅₀ of 14.93 μM, effectively suppressing the proliferation of human gastric cancer cells by downregulating the PAK4/c-Src/EGFR/cyclin D1 pathway and inducing apoptosis.
Targets(IC ₅₀)	Apoptosis,PAK
In vitro	LCH-7749944 (5-20 μM; 12-48 hours) prominently induces a dose-dependent increase in the percentage of cells in G1 phase and decrease in S phase. ?LCH-7749944 (5-30 μM; 24 hours) dramatically decreases levels of phosphoPAK4, phospho-c-Src, phospho-EGFR and cyclin D1 protein expression in a dose-dependent manner.?LCH-7749944 (GNF-PF-2356;?5-50 μM;?24 hours) inhibits the proliferation of MKN-1, BGC823, SGC7901 and MGC803 cells in a concentration dependent manner.??LCH-7749944 (5-20 μM;?12-48 hours) induces apoptosis of SGC7901 cells.

Solubility Information

Solubility	DMSO: 250 mg/mL (713.45 mM),Sonication is recommended. (< 1 mg/ml refers to the product slightly soluble or insoluble)
In vivo Formulation	10% DMSO+40% PEG300+5% Tween 80+45% Saline: 5 mg/mL (14.27 mM),Sonication is recommended. <i>Please add the solvents sequentially, clarifying the solution as much as possible before adding the next one. Dissolve by heating and/or sonication if necessary. Working solution is recommended to be prepared and used immediately. The formulation provided above is for reference purposes only. In vivo formulations may vary and should be modified based on specific experimental conditions.</i>

Preparing Stock Solutions

	1mg	5mg	10mg
1 mM	2.8538 mL	14.269 mL	28.538 mL
5 mM	0.5708 mL	2.8538 mL	5.7076 mL
10 mM	0.2854 mL	1.4269 mL	2.8538 mL
50 mM	0.0571 mL	0.2854 mL	0.5708 mL

Please select the appropriate solvent to prepare the stock solution, according to the solubility of the product in different solvents. Please use it as soon as possible.

Note: The dilution table applies only to solid products. For liquid products, please calculate the stock solution based on the stated concentration and/or density.

Reference

Zhang J, et al. LCH-7749944, a novel and potent p21-activated kinase 4 inhibitor, suppresses proliferation and invasion in human gastric cancer cells. *Cancer Lett.* 2012 Apr 1;317(1):24-32.

Inhibitor · Natural Compounds · Compound Libraries · Recombinant Proteins

This product is for Research Use Only · Not for Human or Veterinary or Therapeutic Use

Tel:781-999-4286 E_mail:info@targetmol.com Address:34 Washington Street,Wellesley Hills,MA 02481