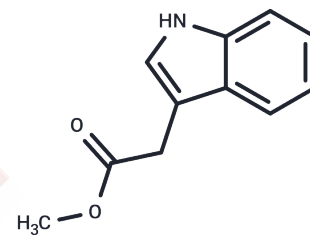


Methyl 2-(1H-indol-3-yl)acetate

Chemical Properties

CAS No. :	1912-33-0
Formula:	C ₁₁ H ₁₁ NO ₂
Molecular Weight:	189.21
Storage:	Powder: -20°C for 3 years In solvent: -80°C for 1 year Actual storage temperature shall be subject to the COA.



Biological Description

Description	Methyl 2-(1H-indol-3-yl)acetate (Methyl indole-3-acetate) is found in apple and isolated from immature seeds of beach pea (<i>Lathyrus maritimus</i>), <i>Vicia amurensis</i> , wild soybean (<i>Glycine soja</i>), lobiya (<i>Vigna catiang</i> var. <i>sinensis</i>), and hyacinth bean (<i>Dolichos lablab</i>).
Targets(IC50)	Endogenous Metabolite

Solubility Information

Solubility	DMSO: 55 mg/mL (290.68 mM), Sonication is recommended. (< 1 mg/ml refers to the product slightly soluble or insoluble)
In vivo Formulation	10% DMSO+40% PEG300+5% Tween 80+45% Saline: 2 mg/mL (10.57 mM), Sonication is recommended. <i>Please add the solvents sequentially, clarifying the solution as much as possible before adding the next one. Dissolve by heating and/or sonication if necessary. Working solution is recommended to be prepared and used immediately. The formulation provided above is for reference purposes only. In vivo formulations may vary and should be modified based on specific experimental conditions.</i>

Preparing Stock Solutions

	1mg	5mg	10mg
1 mM	5.2851 mL	26.4257 mL	52.8513 mL
5 mM	1.057 mL	5.2851 mL	10.5703 mL
10 mM	0.5285 mL	2.6426 mL	5.2851 mL
50 mM	0.1057 mL	0.5285 mL	1.057 mL

Please select the appropriate solvent to prepare the stock solution, according to the solubility of the product in different solvents. Please use it as soon as possible.

Note: The dilution table applies only to solid products. For liquid products, please calculate the stock solution based on the stated concentration and/or density.

Reference

Yannai, Shmuel. (2004) Dictionary of food compounds with CD-ROM: Additives, flavors, and ingredients. Boca Raton: Chapman & Hall/CRC.. .

Inhibitor · Natural Compounds · Compound Libraries · Recombinant Proteins

This product is for Research Use Only· Not for Human or Veterinary or Therapeutic Use

Tel:781-999-4286 E_mail:info@targetmol.com Address:34 Washington Street,Wellesley Hills,MA 02481