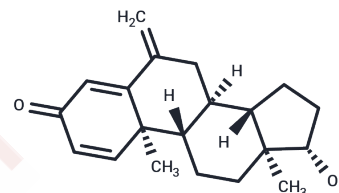


17 $\beta$ -hydroxy Exemestane

## Chemical Properties

CAS No. :	122370-91-6
Formula:	C <sub>20</sub> H <sub>26</sub> O <sub>2</sub>
Molecular Weight:	298.42
Storage:	Powder: -20°C for 3 years   In solvent: -80°C for 1 year Actual storage temperature shall be subject to the COA.



## Biological Description

Description	17 $\beta$ -hydroxy Exemestane is the primary active metabolite of exemestane . It is formed by metabolism of exemestane by the cytochrome P450 (CYP) isoforms CYP1A and CYP4A11. 17 $\beta$ -hydroxy Exemestane is an aromatase inhibitor (IC <sub>50</sub> = 69 nM using human placental microsomes) and an androgen receptor (AR) agonist (IC <sub>50</sub> = 39.6 nM) that is selective for AR over estrogen receptor $\alpha$ (ER $\alpha$ ; IC <sub>50</sub> = 21.2 $\mu$ M). It stimulates growth of AR- and ER $\alpha$ -positive MCF-7 (EC <sub>50</sub> = 2.7 $\mu$ M) and T47D breast cancer cells (EC <sub>50</sub> s = 0.43 and 1,500 nM for AR- and ER-mediated growth, respectively) and inhibits proliferation of testosterone-treated aromatase-overexpressing MCF-7aro cells in a concentration-dependent manner. 17 $\beta$ -hydroxy Exemestane (20 mg/kg) inhibits increases in serum cholesterol and LDL levels and prevents decreases in bone mineral density in the lumbar vertebrae and femur, as well as femoral bending strength and compressive strength of the fifth lumbar vertebrae, in ovariectomized rats.
Targets(IC <sub>50</sub> )	Estrogen Receptor/ERR,Others,Androgen Receptor,LDLR

## Solubility Information

Solubility	Chloroform: Slightly soluble,Heating is recommended. Methanol: Slightly soluble,Heating is recommended. (< 1 mg/ml refers to the product slightly soluble or insoluble)
------------	---

### Preparing Stock Solutions

---

	<b>1mg</b>	<b>5mg</b>	<b>10mg</b>
1 mM	3.351 mL	16.7549 mL	33.5098 mL
5 mM	0.6702 mL	3.351 mL	6.702 mL
10 mM	0.3351 mL	1.6755 mL	3.351 mL
50 mM	0.067 mL	0.3351 mL	0.6702 mL

---

Please select the appropriate solvent to prepare the stock solution, according to the solubility of the product in different solvents. Please use it as soon as possible.

Note: The dilution table applies only to solid products. For liquid products, please calculate the stock solution based on the stated concentration and/or density.

**Inhibitor · Natural Compounds · Compound Libraries · Recombinant Proteins**

This product is for Research Use Only · Not for Human or Veterinary or Therapeutic Use

Tel:781-999-4286 E\_mail:info@targetmol.com Address:34 Washington Street,Wellesley Hills,MA 02481