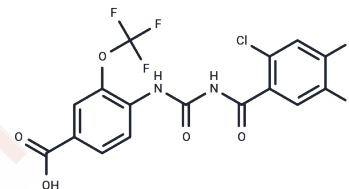


AVE5688

Chemical Properties

CAS No. : 613260-13-2
 Formula: C₁₆H₈ClF₅N₂O₅
 Molecular Weight: 438.69
 Storage: Powder: -20°C for 3 years | In solvent: -80°C for 1 year
 Actual storage temperature shall be subject to the COA.



Biological Description

Description	AVE5688, an inhibitor of glycogen phosphorylase (GP), has IC ₅₀ values of 430 nM and 915 nM, and K _d values of 170 nM and 530 nM for rmGPb and rmGPa, respectively. It is suitable for research on type 2 diabetes.
Targets(IC ₅₀)	Others,Phosphorylase

Solubility Information

Solubility	DMSO: 55 mg/mL (125.37 mM),Sonication is recommended. (< 1 mg/ml refers to the product slightly soluble or insoluble)
In vivo Formulation	10% DMSO+90% Corn Oil: 2.5 mg/mL (5.7 mM),Sonication is recommended. <i>Please add the solvents sequentially, clarifying the solution as much as possible before adding the next one. Dissolve by heating and/or sonication if necessary. Working solution is recommended to be prepared and used immediately. The formulation provided above is for reference purposes only. In vivo formulations may vary and should be modified based on specific experimental conditions.</i>

Preparing Stock Solutions

	1mg	5mg	10mg
1 mM	2.2795 mL	11.3976 mL	22.7951 mL
5 mM	0.4559 mL	2.2795 mL	4.559 mL
10 mM	0.228 mL	1.1398 mL	2.2795 mL
50 mM	0.0456 mL	0.228 mL	0.4559 mL

Please select the appropriate solvent to prepare the stock solution, according to the solubility of the product in different solvents. Please use it as soon as possible.

Note: The dilution table applies only to solid products. For liquid products, please calculate the stock solution based on the stated concentration and/or density.

Reference

Anderka O, et al. Thermodynamic characterization of allosteric glycogen phosphorylase inhibitors. Biochemistry. 2008 Apr 22;47(16):4683-91.

Inhibitor · Natural Compounds · Compound Libraries · Recombinant Proteins

This product is for Research Use Only· Not for Human or Veterinary or Therapeutic Use

Tel:781-999-4286 E_mail:info@targetmol.com Address:34 Washington Street,Wellesley Hills,MA 02481