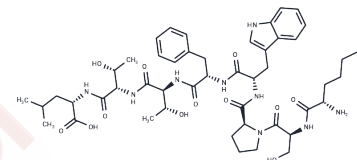


KSPWFTTL

## Chemical Properties

CAS No. : 153049-05-9  
 Formula: C<sub>48</sub>H<sub>70</sub>N<sub>10</sub>O<sub>12</sub>  
 Molecular Weight: 979.146  
 Storage: Keep away from moisture  
 Powder: -20°C for 3 years | In solvent: -80°C for 1 year  
*Actual storage temperature shall be subject to the COA.*



## Biological Description

Description	KSPWFTTL is an immunodominant epitope derived from the p15E transmembrane protein. It is Kb-restricted and can enhance the susceptibility of a tumor cell line to cytotoxic T lymphocytes targeting anti-AKR/Gross MuLV.
Targets(IC50)	MHC
In vitro	KSPWFTTL, originating from the retroviral p15 TM envelope protein, sensitizes the previously resistant cl.18-5 clonal line to cytolytic T-lymphocyte (CTL) induced lysis upon pulsing with the peptide, thereby rendering these cells vulnerable to destruction by antiviral CTLs[2].

## Preparing Stock Solutions

	1mg	5mg	10mg
1 mM	1.0213 mL	5.1065 mL	10.2129 mL
5 mM	0.2043 mL	1.0213 mL	2.0426 mL
10 mM	0.1021 mL	0.5106 mL	1.0213 mL
50 mM	0.0204 mL	0.1021 mL	0.2043 mL

Please select the appropriate solvent to prepare the stock solution, according to the solubility of the product in different solvents. Please use it as soon as possible.

Note: The dilution table applies only to solid products. For liquid products, please calculate the stock solution based on the stated concentration and/or density.

## Reference

White HD, et, al. An immunodominant Kb-restricted peptide from the p15E transmembrane protein of endogenous ecotropic murine leukemia virus (MuLV) AKR623 that restores susceptibility of a tumor line to anti-AKR/Gross MuLV cytotoxic T lymphocytes. J Virol. 1994 Feb;68(2):897-904.

Rich RF, et, al. Antiretroviral cytolytic T-lymphocyte nonresponsiveness: FasL/Fas-mediated inhibition of CD4(+) and CD8(+) antiviral T cells by viral antigen-positive veto cells. J Virol. 1999 May;73(5):3826-34.

**Inhibitor · Natural Compounds · Compound Libraries · Recombinant Proteins**

This product is for Research Use Only · Not for Human or Veterinary or Therapeutic Use

Tel:781-999-4286 E\_mail:info@targetmol.com Address:34 Washington Street,Wellesley Hills,MA 02481