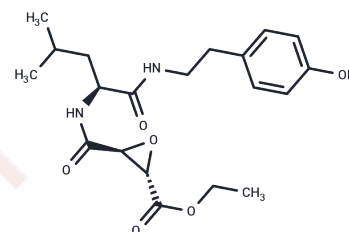


## JPM-OEt

## Chemical Properties

CAS No. :	262381-84-0
Formula:	C <sub>20</sub> H <sub>28</sub> N <sub>2</sub> O <sub>6</sub>
Molecular Weight:	392.45
Storage:	Powder: -20°C for 3 years   In solvent: -80°C for 1 year Actual storage temperature shall be subject to the COA.



## Biological Description

Description	JPM-OEt is a broad-spectrum cysteine cathepsin inhibitor with antitumor activity that binds covalently at the active site, irreversibly inhibiting the cysteine cathepsin family.
Targets(IC50)	Others,Cysteine Protease
In vivo	JPM-OEt (50 mg/kg; i.p.; daily for 30 days) significantly decreases tumor cathepsin B activity[1]. JPM-OEt (50 mg/kg; i.p.; twice daily for 4 weeks) induces tumor regression in the RIP1-Tag2 (RT2) mouse model of pancreatic islet cell tumorigenesis[2]. JPM-OEt (50 mg/kg; i.p.; daily from 63 to 98 days) significantly delays tumor burden increase during the first 2 weeks of treatment[3].

## Preparing Stock Solutions

	1mg	5mg	10mg
1 mM	2.5481 mL	12.7405 mL	25.481 mL
5 mM	0.5096 mL	2.5481 mL	5.0962 mL
10 mM	0.2548 mL	1.274 mL	2.5481 mL
50 mM	0.051 mL	0.2548 mL	0.5096 mL

Please select the appropriate solvent to prepare the stock solution, according to the solubility of the product in different solvents. Please use it as soon as possible.

Note: The dilution table applies only to solid products. For liquid products, please calculate the stock solution based on the stated concentration and/or density.

### Reference

Withana NP, et al. Cathepsin B inhibition limits bone metastasis in breast cancer. *Cancer Res.* 2012 Mar 1;72(5):1199-209.

Bell-McGuinn KM, et al. Inhibition of cysteine cathepsin protease activity enhances chemotherapy regimens by decreasing tumor growth and invasiveness in a mouse model of multistage cancer. *Cancer Res.* 2007 Aug 1;67(15):7378-85.

Schurigt U, et al. Trial of the cysteine cathepsin inhibitor JPM-OEt on early and advanced mammary cancer stages in the MMTV-PyMT-transgenic mouse model. *Biol Chem.* 2008 Aug;389(8):1067-74.

**Inhibitor · Natural Compounds · Compound Libraries · Recombinant Proteins**

This product is for Research Use Only · Not for Human or Veterinary or Therapeutic Use

Tel:781-999-4286 E\_mail:info@targetmol.com Address:34 Washington Street,Wellesley Hills,MA 02481