

[Leu5]-Enkephalin

Chemical Properties

CAS No. : 58822-25-6

Formula: C₂₈H₃₇N₅O₇

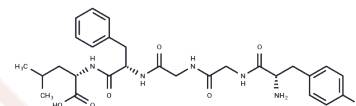
Molecular Weight: 555.62

Storage:

Store at low temperature, Keep away from moisture,
Keep away from direct sunlight

Powder: -20°C for 3 years | In solvent: -80°C for 1 year

Actual storage temperature shall be subject to the COA.



Biological Description

Description	[Leu5]-Enkephalin (Leu-enkephalin) is an endogenous neuropeptide involved in nociception and an agonist of δ -opioid and μ -opioid receptors (K_{is} = 4.0 and 3.4 nM, respectively)
Targets(IC50)	Opioid Receptor, Endogenous Metabolite
In vivo	[Leu5]-Enkephalin is found in the brain, the brainstem, and the spinal cord as well as in the peripheral nervous system. Leu-Enkephalin (1 mg/kg) decreases the visceromotor response to colon distension in a mouse model of visceral pain induced by colorectal distension[1].

Solubility Information

Solubility	DMSO: 150 mg/mL (269.97 mM), Sonication is recommended. (< 1 mg/ml refers to the product slightly soluble or insoluble)
------------	---

Preparing Stock Solutions

	1mg	5mg	10mg
1 mM	1.7998 mL	8.999 mL	17.9979 mL
5 mM	0.360 mL	1.7998 mL	3.5996 mL
10 mM	0.180 mL	0.8999 mL	1.7998 mL
50 mM	0.036 mL	0.180 mL	0.360 mL

Please select the appropriate solvent to prepare the stock solution, according to the solubility of the product in different solvents. Please use it as soon as possible.

Note: The dilution table applies only to solid products. For liquid products, please calculate the stock solution based on the stated concentration and/or density.

Reference

Fabisiak A , Małgorzata Sobocińska, Elżbieta Kamysz, et al. Antinociceptive potency of enkephalins and enkephalinase inhibitors in the mouse model of colorectal distension - proof of concept[J]. Chemical Biology & Drug Design, 2018, 92(1).

Meunier J C , Moisand C . Binding of leu5-enkephalin and met5-enkephalin to a particulate fraction from rat cerebrum[J]. Febs Letters, 1977, 77(2):0-213.

Inhibitor · Natural Compounds · Compound Libraries · Recombinant Proteins

This product is for Research Use Only· Not for Human or Veterinary or Therapeutic Use

Tel:781-999-4286 E_mail:info@targetmol.com Address:34 Washington Street,Wellesley Hills,MA 02481