

(R)-(+)-Corypalmine

Chemical Properties

CAS No. : 13063-54-2

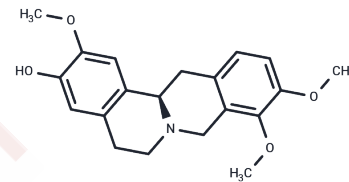
Formula: C₂₀H₂₃NO₄

Molecular Weight: 341.4

Keep away from direct sunlight

Storage: Powder: -20°C for 3 years | In solvent: -80°C for 1 year

Actual storage temperature shall be subject to the COA.



Biological Description

Description	1. (R)-(+)-Corypalmine ((+)-Corypalmine) shows strong papaverine-like activity.
Targets(IC50)	Others

Solubility Information

Solubility	DMSO: 11 mg/mL (32.22 mM), Sonication is recommended. (< 1 mg/ml refers to the product slightly soluble or insoluble)
------------	--

Preparing Stock Solutions

	1mg	5mg	10mg
1 mM	2.9291 mL	14.6456 mL	29.2912 mL
5 mM	0.5858 mL	2.9291 mL	5.8582 mL
10 mM	0.2929 mL	1.4646 mL	2.9291 mL
50 mM	0.0586 mL	0.2929 mL	0.5858 mL

Please select the appropriate solvent to prepare the stock solution, according to the solubility of the product in different solvents. Please use it as soon as possible.

Note: The dilution table applies only to solid products. For liquid products, please calculate the stock solution based on the stated concentration and/or density.

Reference

Maurya S , Srivastava J S , Jha R N , et al. Efficacy of alkaloid (-)-corypalmine against spore germination of some fungi[J]. Folia Microbiologica, 2002, 47(3):287-290.

Inhibitor · Natural Compounds · Compound Libraries · Recombinant Proteins

This product is for Research Use Only · Not for Human or Veterinary or Therapeutic Use

Tel:781-999-4286 E_mail:info@targetmol.com Address:34 Washington Street,Wellesley Hills,MA 02481