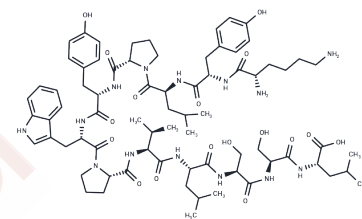


KYL peptide

Chemical Properties

CAS No. :	676657-00-4
Formula:	C74H108N14O17
Molecular Weight:	1465.75
Storage:	Keep away from moisture Powder: -20°C for 3 years In solvent: -80°C for 1 year <small>Actual storage temperature shall be subject to the COA.</small>



Biological Description

Description	KYL peptide is an EphA4 receptor tyrosine kinase inhibitor (Kd = 0.8 μ M); inhibits EphA4-EphrinA5 interactions (IC50 = 6.34 μ M). Prevents A β O induced synaptic damage, dendritic spine loss and prevents the blocking of LTP in hippocampal CA3-CA1 transmissions. Exhibits a long half life in cell culture media (8 and 12 hours in PC3 and C2C12 media respectively). Neuroprotective.
Targets(IC50)	Ephrin Receptor

Solubility Information

Solubility	H2O: 2 mg/mL (1.36 mM), Sonication is recommended. (< 1 mg/ml refers to the product slightly soluble or insoluble)
------------	---

Preparing Stock Solutions

	1mg	5mg	10mg
1 mM	0.6822 mL	3.4112 mL	6.8224 mL
5 mM	0.1364 mL	0.6822 mL	1.3645 mL
10 mM	0.0682 mL	0.3411 mL	0.6822 mL
50 mM	0.0136 mL	0.0682 mL	0.1364 mL

Please select the appropriate solvent to prepare the stock solution, according to the solubility of the product in different solvents. Please use it as soon as possible.

Note: The dilution table applies only to solid products. For liquid products, please calculate the stock solution based on the stated concentration and/or density.

Reference

Lamberto et al (2012) Distinctive binding of three antagonistic peptides to the ephrin-binding pocket of the EphA4 receptor. Biochem. J. 445 47 PMID:

Vargas et al (2014) EphA4 activation of c-Abl mediates synaptic loss and LTP blockade caused by amyloid- β oligomers. PLoS One. 9 e92309 PMID:

Inhibitor · Natural Compounds · Compound Libraries · Recombinant Proteins

This product is for Research Use Only· Not for Human or Veterinary or Therapeutic Use

Tel:781-999-4286 E_mail:info@targetmol.com Address:34 Washington Street,Wellesley Hills,MA 02481