

CH 66

Chemical Properties

CAS No. : 139890-66-7

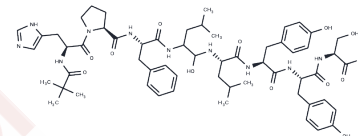
Formula: C₅₈H₈₁N₁₁O₁₂

Molecular Weight: 1124.33

Keep away from moisture

Storage: Powder: -20°C for 3 years | In solvent: -80°C for 1 year

Actual storage temperature shall be subject to the COA.



Biological Description

Description	CH 66 is an inhibitor of renin.
Targets(IC50)	Others

Preparing Stock Solutions

	1mg	5mg	10mg
1 mM	0.8894 mL	4.4471 mL	8.8942 mL
5 mM	0.1779 mL	0.8894 mL	1.7788 mL
10 mM	0.0889 mL	0.4447 mL	0.8894 mL
50 mM	0.0178 mL	0.0889 mL	0.1779 mL

Please select the appropriate solvent to prepare the stock solution, according to the solubility of the product in different solvents. Please use it as soon as possible.

Note: The dilution table applies only to solid products. For liquid products, please calculate the stock solution based on the stated concentration and/or density.

Reference

Dealwis CG, Frazao C, Badasso M, Cooper JB, Tickle IJ, Driessen H, Blundell TL, Murakami K, Miyazaki H, Sueiras-Diaz J, et al. X-ray analysis at 2.0 Å resolution of mouse submaxillary renin complexed with a decapeptide inhibitor CH-66, based on the 4-16 fragment of rat angiotensinogen. *J Mol Biol.* 1994 Feb 11;236(1):342-60. PubMed PMID: 8107115.

Kvist S, Mulvany MJ, Aalkjaer C. Studies of the renin-angiotensin system in the wall of rat femoral resistance vessels. *Eur J Pharmacol.* 1991 May 30;198(1):77-83. PubMed PMID: 1915579.

Guruprasad K, Blundell TL, Xie S, Green J, Szafranska B, Nagel RJ, McDowell K, Baker CB, Roberts RM. Comparative modelling and analysis of amino acid substitutions suggests that the family of pregnancy-associated glycoproteins includes both active and inactive aspartic proteinases. *Protein Eng.* 1996 Oct;9(10):849-56. PubMed PMID: 8931124.

Kervinen J, Törmäkangas K, Runeberg-Roos P, Guruprasad K, Blundell T, Teeri TH. Structure and possible function of aspartic proteinases in barley and other plants. *Adv Exp Med Biol.* 1995;362:241-54. Review. PubMed PMID: 8540324.

Inhibitor · Natural Compounds · Compound Libraries · Recombinant Proteins

This product is for Research Use Only · Not for Human or Veterinary or Therapeutic Use

Tel:781-999-4286 E_mail:info@targetmol.com Address:34 Washington Street,Wellesley Hills,MA 02481