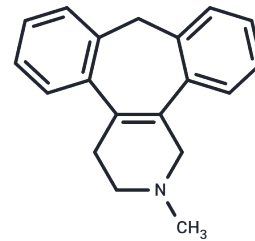


Setiptiline

Chemical Properties

CAS No. :	57262-94-9
Formula:	C ₁₉ H ₁₉ N
Molecular Weight:	261.36
Storage:	Store at low temperature Powder: -20°C for 3 years In solvent: -80°C for 1 year <small>Actual storage temperature shall be subject to the COA.</small>



Biological Description

Description	Setiptiline (Org-8282) is a norepinephrine reuptake inhibitor, 2-adrenergic receptor antagonist, H1 receptor inverse agonist, and a serotonin receptor antagonist with antidepressant activity.
Targets(IC50)	5-HT Receptor, Adrenergic Receptor

Solubility Information

Solubility	DMSO: 20 mg/mL (76.52 mM), Sonication is recommended. (< 1 mg/ml refers to the product slightly soluble or insoluble)
In vivo Formulation	10% DMSO+90% Corn Oil: 2 mg/mL (7.65 mM), Sonication is recommended. <i>Please add the solvents sequentially, clarifying the solution as much as possible before adding the next one. Dissolve by heating and/or sonication if necessary. Working solution is recommended to be prepared and used immediately. The formulation provided above is for reference purposes only. In vivo formulations may vary and should be modified based on specific experimental conditions.</i>

Preparing Stock Solutions

	1mg	5mg	10mg
1 mM	3.8261 mL	19.1307 mL	38.2614 mL
5 mM	0.7652 mL	3.8261 mL	7.6523 mL
10 mM	0.3826 mL	1.9131 mL	3.8261 mL
50 mM	0.0765 mL	0.3826 mL	0.7652 mL

Please select the appropriate solvent to prepare the stock solution, according to the solubility of the product in different solvents. Please use it as soon as possible.

Note: The dilution table applies only to solid products. For liquid products, please calculate the stock solution based on the stated concentration and/or density.

Reference

- Yamada K, et al. [Behavioral effects of a new antidepressant, setiptiline]. Nihon Yakurigaku Zasshi. 1991 Jan;97(1): 31-9.
- Kamimura M, Aoba A, Yamaguchi N et al. The effect of age on plasma level of setiptiline maleate in depressed patients. Prog Neuropsychopharmacol Biol Psychiatry. 1994 Oct;18(6):1015-26.
- Kuniyoshi M, et al. Effectiveness of concomitant setiptiline maleate (Tecipul) on negative symptoms of schizophrenia. Prog Neuropsychopharmacol Biol Psychiatry. 1994 Mar;18(2):339-46.
- Niho T, et al. [Pharmacological properties of MO-8282, a novel antidepressant]. Nihon Yakurigaku Zasshi. 1986 Oct; 88(4):309-20.
- Li T, et al. MAARS Software for Automatic and Quantitative Analysis of Mitotic Progression. Methods Mol Biol. 2024; 2740:275-293.

Inhibitor · Natural Compounds · Compound Libraries · Recombinant Proteins

This product is for Research Use Only · Not for Human or Veterinary or Therapeutic Use

Tel:781-999-4286 E_mail:info@targetmol.com Address:34 Washington Street,Wellesley Hills,MA 02481