

LEP(116-130)(mouse)

## Chemical Properties

CAS No. : 258276-95-8

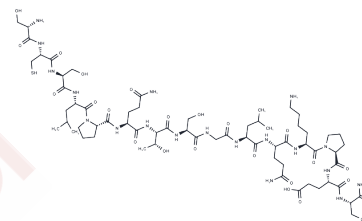
Formula: C64H109N19O24S

Molecular Weight: 1560.73

Keep away from moisture

Storage: Pure form: -20°C for 3 years | In solvent: -80°C for 1 year

Actual storage temperature shall be subject to the COA.



## Biological Description

Description	Leptin (116-130),mouse(C64H109N19O24S),a peptide with the sequence Ser-Cys-Ser-Leu-Pro-Gln-Thr-Ser-Gly-Leu-Gln-Lys-Pro-Glu-Ser-NH <sub>2</sub> . Leptin is an adipocyte-derived hormone that acts as a major regulator for food intake and energy homeostasis.
Targets(IC50)	Others
In vitro	LEP-(116-130) (300 μM) fails to inhibit AP-OB binding and does not activate OB-Rb signal transduction in vitro[1].
In vivo	Administration of LEP-(116-130) (1 mg, i.p.) results in decreased body weight gain, even with increased food consumption relative to vehicle-injected control mice. It significantly reduces blood glucose levels by approximately 100 mg/dL. However, in wild-type (+/+) C57BLKS/J-m mice, LEP-(116-130) does not affect thermoregulation over 4 or 7 days[1].

## Solubility Information

Solubility	DMSO: 10 mM,Sonication is recommended. (< 1 mg/ml refers to the product slightly soluble or insoluble)
------------	---

### Preparing Stock Solutions

---

	1mg	5mg	10mg
1 mM	0.6407 mL	3.2036 mL	6.4073 mL
5 mM	0.1281 mL	0.6407 mL	1.2815 mL
10 mM	0.0641 mL	0.3204 mL	0.6407 mL
50 mM	0.0128 mL	0.0641 mL	0.1281 mL

---

Please select the appropriate solvent to prepare the stock solution, according to the solubility of the product in different solvents. Please use it as soon as possible.

Note: The dilution table applies only to solid products. For liquid products, please calculate the stock solution based on the stated concentration and/or density.

### Reference

Grasso P, et al. Inhibitory effects of leptin-related synthetic peptide 116-130 on food intake and body weight gain in female C57BL/6J ob/ob mice may not be mediated by peptide activation of the long isoform of the leptin receptor. *Diabetes*. 1999 Nov;48(11):2204-9.

**Inhibitor · Natural Compounds · Compound Libraries · Recombinant Proteins**

This product is for Research Use Only · Not for Human or Veterinary or Therapeutic Use

Tel:781-999-4286 E\_mail:info@targetmol.com Address:34 Washington Street,Wellesley Hills,MA 02481