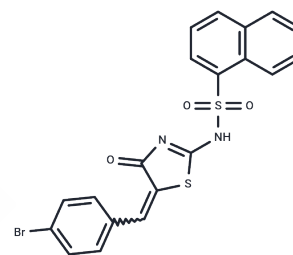


Clathrin-IN-1

Chemical Properties

CAS No. :	1332879-52-3
Formula:	C ₂₀ H ₁₃ BrN ₂ O ₃ S ₂
Molecular Weight:	473.36
Storage:	Powder: -20°C for 3 years In solvent: -80°C for 1 year Actual storage temperature shall be subject to the COA.



Biological Description

Description	Clathrin-IN-1 is a inhibitor of clathrin, and inhibits clathrin-mediated endocytosis (CME) by associating with the terminal domain of clathrin. It has the potential for anti-cancer research.
Targets(IC50)	HIV Protease
In vitro	Clathrin-IN-1 did not impair clathrin recruitment to the spindle but disrupted its function once stationed there. Clathrin-IN-1 trapped HeLa cells in metaphase through loss of mitotic spindle integrity and activation of the spindle assembly checkpoint, phenocopying clathrin depletion and aurora A kinase inhibition[1].

Solubility Information

Solubility	DMSO: 34.29 mg/mL (72.44 mM),Sonication is recommended. (< 1 mg/ml refers to the product slightly soluble or insoluble)
------------	--

Preparing Stock Solutions

	1mg	5mg	10mg
1 mM	2.1126 mL	10.5628 mL	21.1256 mL
5 mM	0.4225 mL	2.1126 mL	4.2251 mL
10 mM	0.2113 mL	1.0563 mL	2.1126 mL
50 mM	0.0423 mL	0.2113 mL	0.4225 mL

Please select the appropriate solvent to prepare the stock solution, according to the solubility of the product in different solvents. Please use it as soon as possible.

Note: The dilution table applies only to solid products. For liquid products, please calculate the stock solution based on the stated concentration and/or density.

Reference

Smith CM, et, al. Inhibition of clathrin by pitstop 2 activates the spindle assembly checkpoint and induces cell death in dividing HeLa cancer cells. Mol Cancer. 2013 Jan 17; 12:4.

Kumar GA, et, al. Leishmania donovani Internalizes into Host Cells via Caveolin-mediated Endocytosis. Sci Rep. 2019 Sep 2; 9(1): 12636.

Inhibitor · Natural Compounds · Compound Libraries · Recombinant Proteins

This product is for Research Use Only· Not for Human or Veterinary or Therapeutic Use

Tel:781-999-4286 E_mail:info@targetmol.com Address:34 Washington Street,Wellesley Hills,MA 02481