

## Angiotensin 1/2 (1-7) amide

## Chemical Properties

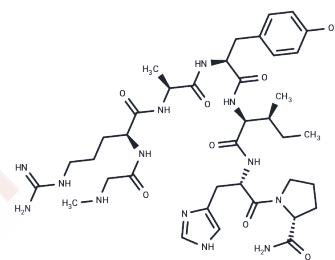
CAS No. :

Formula: C41H63N13O10

Molecular Weight: 898.02

Storage: Powder: -20°C for 3 years | In solvent: -80°C for 1 year

Actual storage temperature shall be subject to the COA.



## Biological Description

Description	Angiotensin I/II (1-7) amide is a peptide analog to angiotensin II that is used as a vasopressor in the treatment of certain types of shock and circulatory collapse. Angiotensin I/II amide is an amide derivative of angiotensin II that is a powerful vasoconstrictor and vasopressor and is used in the treatment of certain hypotensive states. Angiotensin I/II amide is usually administered by slow intravenous infusion, and sometimes intramuscularly or subcutaneously.
Targets(IC50)	Others

## Solubility Information

Solubility	DMSO: ≥89.8 mg/mL, Sonication is recommended. (< 1 mg/ml refers to the product slightly soluble or insoluble)
------------	--

## Preparing Stock Solutions

	1mg	5mg	10mg
1 mM	1.1136 mL	5.5678 mL	11.1356 mL
5 mM	0.2227 mL	1.1136 mL	2.2271 mL
10 mM	0.1114 mL	0.5568 mL	1.1136 mL
50 mM	0.0223 mL	0.1114 mL	0.2227 mL

Please select the appropriate solvent to prepare the stock solution, according to the solubility of the product in different solvents. Please use it as soon as possible.

Note: The dilution table applies only to solid products. For liquid products, please calculate the stock solution based on the stated concentration and/or density.

**Inhibitor · Natural Compounds · Compound Libraries · Recombinant Proteins**

This product is for Research Use Only · Not for Human or Veterinary or Therapeutic Use

Tel:781-999-4286 E\_mail:info@targetmol.com Address:34 Washington Street,Wellesley Hills,MA 02481