

GP(33-41)

Chemical Properties

CAS No. : 161928-86-5

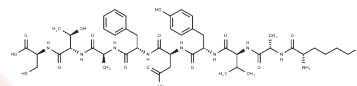
Formula: CTFKNVY

Molecular Weight: 226.98

Keep away from moisture

Storage: Powder: -20°C for 3 years | In solvent: -80°C for 1 year

Actual storage temperature shall be subject to the COA.



Biological Description

Description	GP(33-41), a 9-aa-long peptide, is the optimal sequence of the GP1 epitope of lymphocytic choriomeningitis virus, and can upregulate H-2Db molecules at the RMA-S (Db Kb) cell surface with a SC50 of 344 nM. GP(33-41) Epitope is a strong agonist of CD8 T cells from P14 TCR-transgenic mice.
Targets(IC50)	Anti-infection, Virus Protease

Preparing Stock Solutions

	1mg	5mg	10mg
1 mM	4.4057 mL	22.0284 mL	44.0567 mL
5 mM	0.8811 mL	4.4057 mL	8.8113 mL
10 mM	0.4406 mL	2.2028 mL	4.4057 mL
50 mM	0.0881 mL	0.4406 mL	0.8811 mL

Please select the appropriate solvent to prepare the stock solution, according to the solubility of the product in different solvents. Please use it as soon as possible.

Note: The dilution table applies only to solid products. For liquid products, please calculate the stock solution based on the stated concentration and/or density.

Reference

Gairin JE, et al. Optimal lymphocytic choriomeningitis virus sequences restricted by H-2Db major histocompatibility complex class I molecules and presented to cytotoxic T lymphocytes. J Virol. 1995 Apr;69(4):2297-305.

Inhibitor · Natural Compounds · Compound Libraries · Recombinant Proteins

This product is for Research Use Only · Not for Human or Veterinary or Therapeutic Use

Tel:781-999-4286 E_mail:info@targetmol.com Address:34 Washington Street,Wellesley Hills,MA 02481