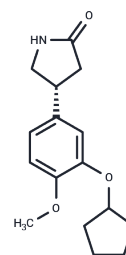


(R)-(-)-Rolipram

Chemical Properties

CAS No. :	85416-75-7
Formula:	C ₁₆ H ₂₁ NO ₃
Molecular Weight:	275.34
Storage:	Powder: -20°C for 3 years In solvent: -80°C for 1 year Actual storage temperature shall be subject to the COA.



Biological Description

Description	(R)-(-)-Rolipram ((-)-Rolipram) is an R-enantiomer of Rolipram which is a PDE4 inhibitor.
Targets(IC50)	DNA-PK,PDE
In vitro	The reduction of (R)-(-)-rolipram on cAMP hydrolysis and the increasement of adenylyl cyclase activator forskolin on cAMP synthesis in a dose-dependent manner inhibits caspase-1 cleavage and IL-1 β secretion[1].

Solubility Information

Solubility	DMSO: 95 mg/mL (345.03 mM),Sonication is recommended. (< 1 mg/ml refers to the product slightly soluble or insoluble)
In vivo Formulation	10% DMSO+40% PEG300+5% Tween 80+45% Saline: 3.3 mg/mL (11.99 mM),Sonication is recommended. <i>Please add the solvents sequentially, clarifying the solution as much as possible before adding the next one. Dissolve by heating and/or sonication if necessary. Working solution is recommended to be prepared and used immediately. The formulation provided above is for reference purposes only. In vivo formulations may vary and should be modified based on specific experimental conditions.</i>

Preparing Stock Solutions

	1mg	5mg	10mg
1 mM	3.6319 mL	18.1594 mL	36.3187 mL
5 mM	0.7264 mL	3.6319 mL	7.2637 mL
10 mM	0.3632 mL	1.8159 mL	3.6319 mL
50 mM	0.0726 mL	0.3632 mL	0.7264 mL

Please select the appropriate solvent to prepare the stock solution, according to the solubility of the product in different solvents. Please use it as soon as possible.

Note: The dilution table applies only to solid products. For liquid products, please calculate the stock solution based on the stated concentration and/or density.

Reference

Guo C, et al. Bile Acids Control Inflammation and Metabolic Disorder through Inhibition of NLRP3 Inflammasome. *Immunity*. 2016 Oct 18;45(4):944.

Inhibitor · Natural Compounds · Compound Libraries · Recombinant Proteins

This product is for Research Use Only · Not for Human or Veterinary or Therapeutic Use

Tel:781-999-4286 E_mail:info@targetmol.com Address:34 Washington Street,Wellesley Hills,MA 02481